

Staða og horfur á vinnumarkaði í aðdraganda kjarasamninga

Katrín Ólafsdóttir, dósent

2. júní 2022



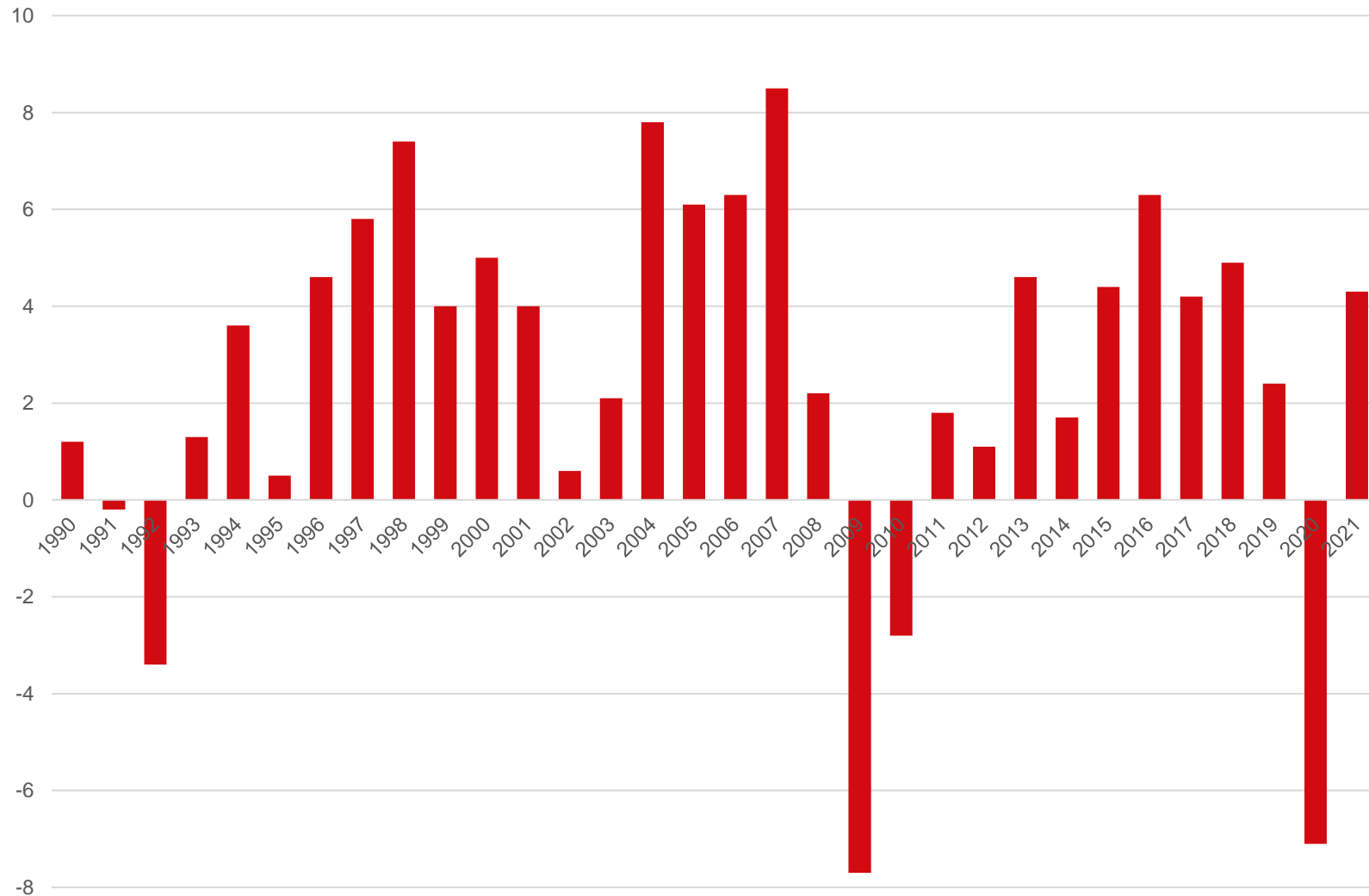


Snúin staða

- Óvissa í alþjóðamálum
- Covid-19
- Stríð í Úkraínu
- Hnökrar í framleiðslukeðjunni
- Hækkun hrávöruverðs
- Mesta verðbólga í 40 ár
- Hagvöxtur
- Þenslu spáð
- Minnkandi atvinnuleysi
- Hækkandi húsnæðisverð
- Vaxandi verðbólga
- Hækkandi vextir
- Halli á rekstri ríkissjóðs

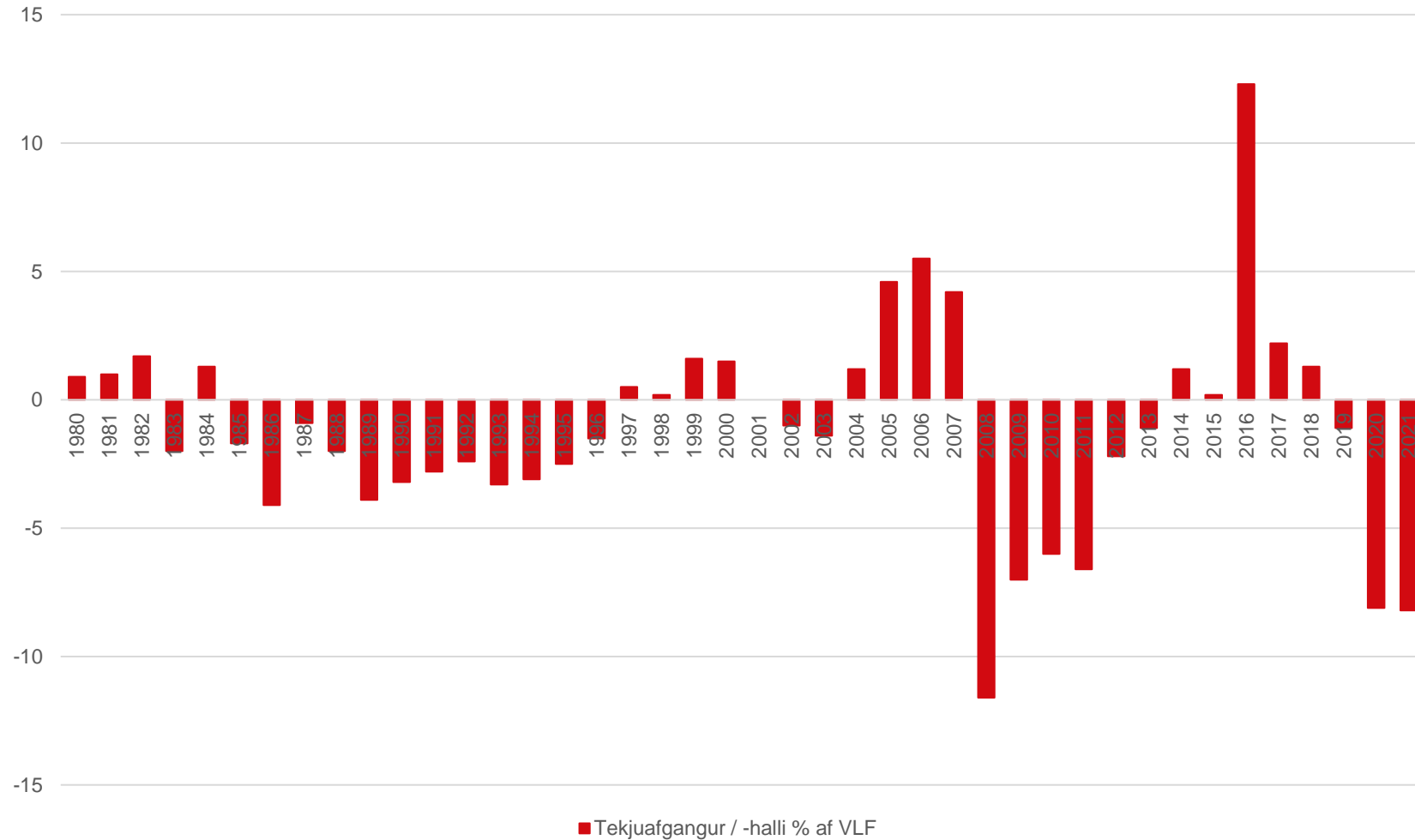


Hagvöxtur





Afkoma ríkissjóðs

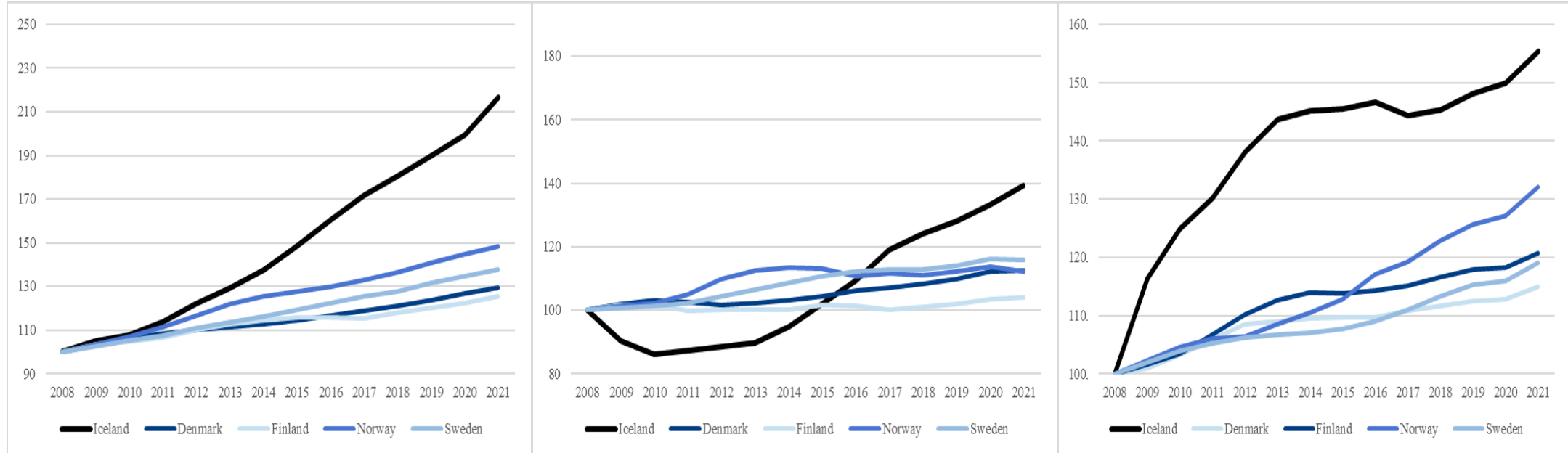


Þróun launa og kaupmáttar



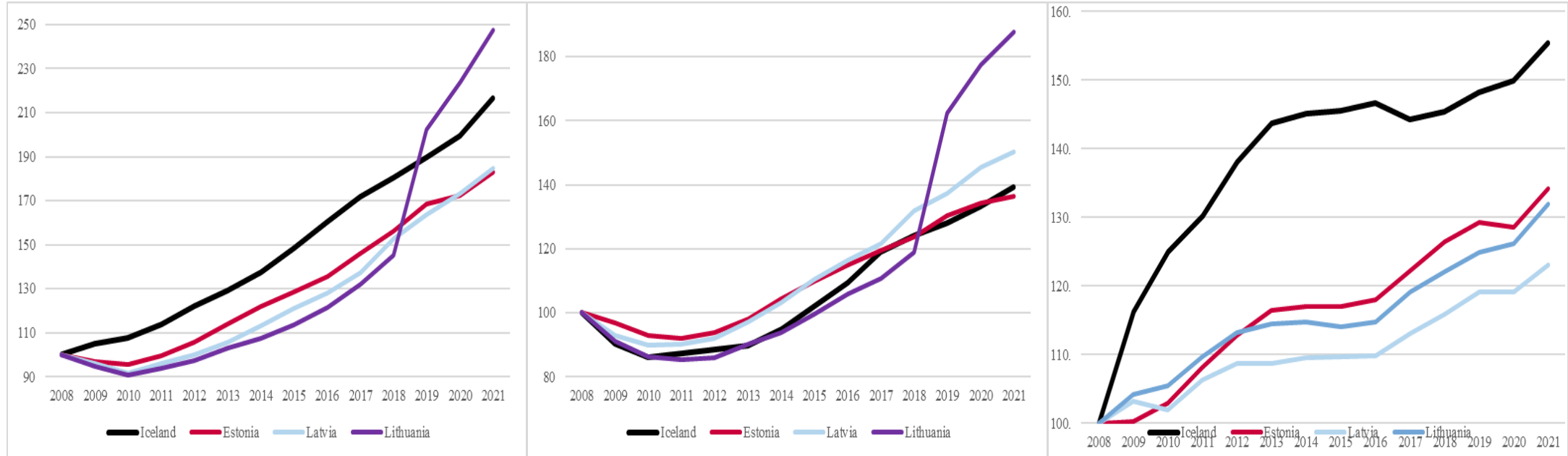


Launapróun á Norðurlöndunum





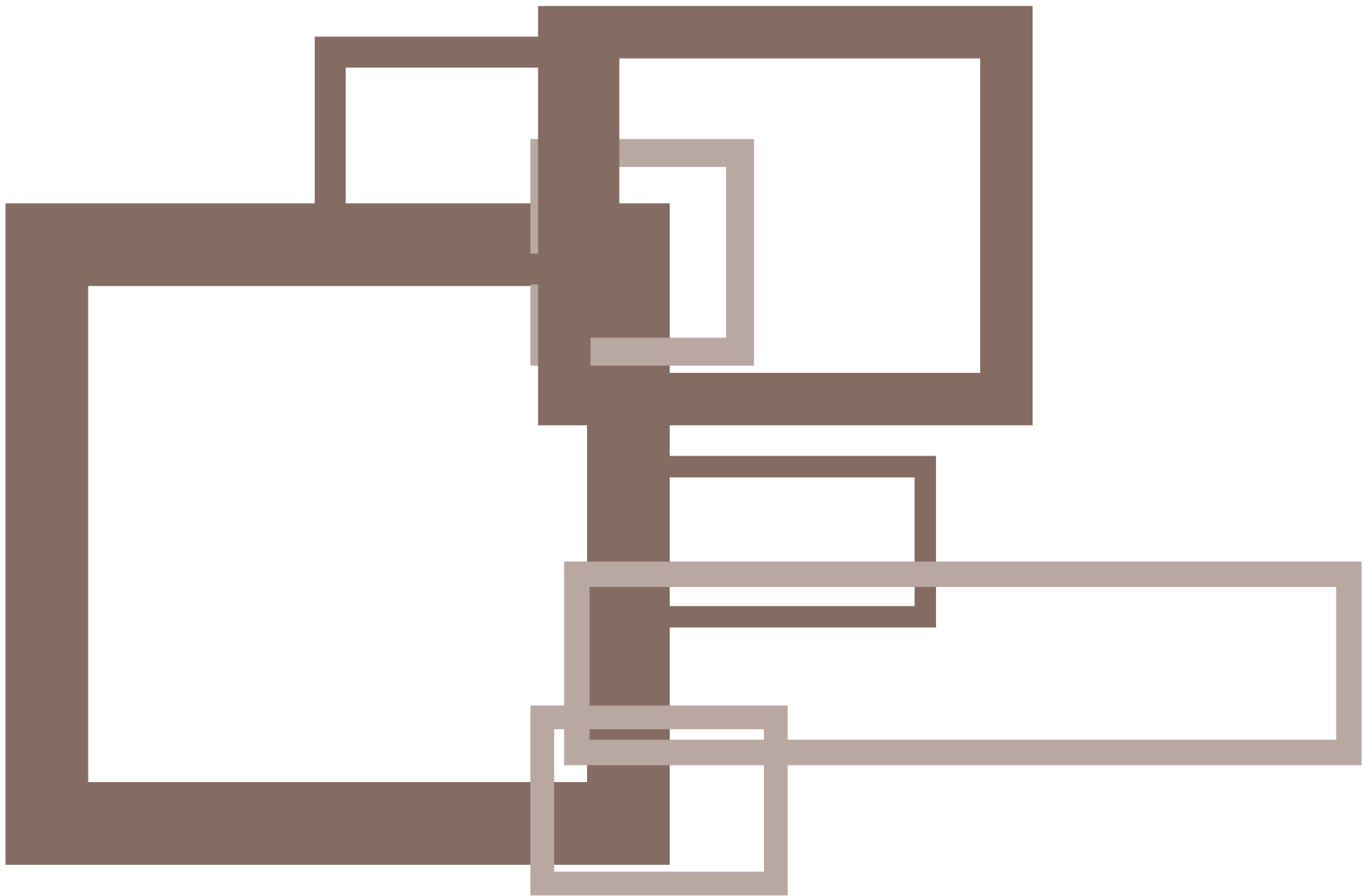
Launapróun á Íslandi og Eyrstrasaltsríkjunum

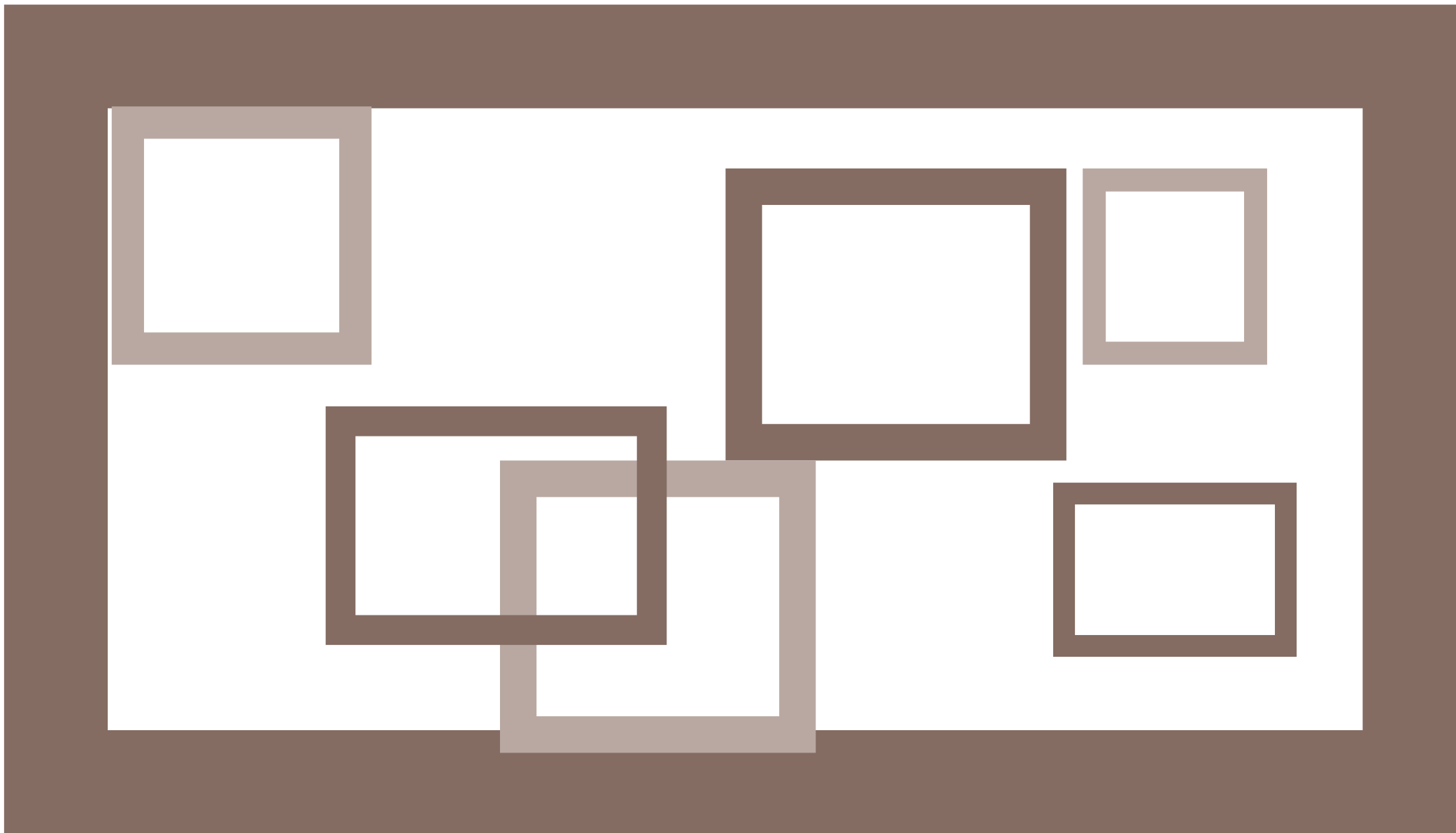




Hvers vegna meiri launahækkarnir en ekki meiri kaupmáttaraukning?

- Staða Íslands í alþjóðahagkerfinu
- Hagstjórn
 - Fjármálastjórn
 - Peningamálastjórn
- Kjarasamningsumhverfið





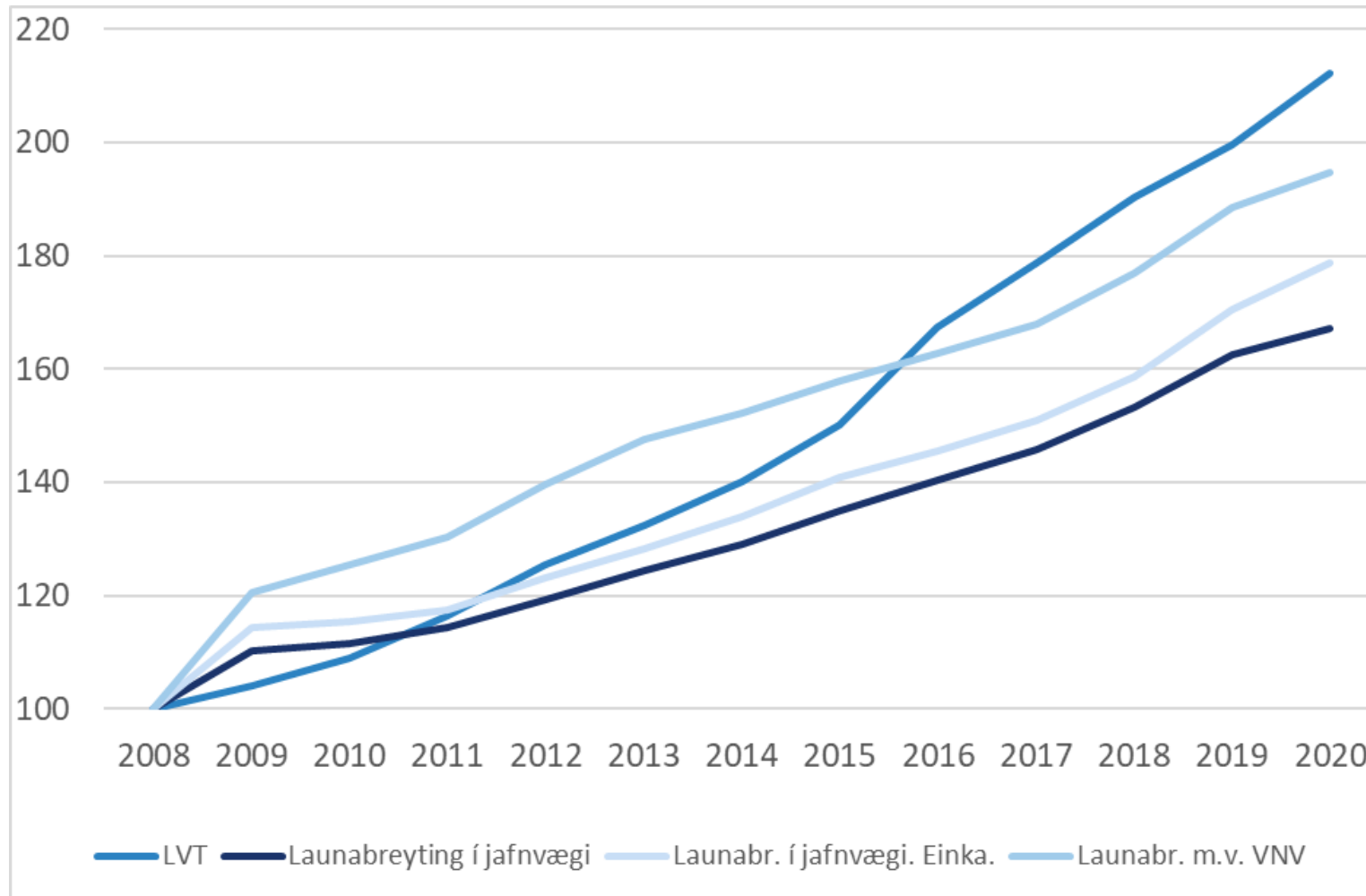


Hvernig er hægt að bæta samninga?

- Efla traust
- Bæta gæði og úrvinnslu gagna
 - KTN
 - Norska leiðin
- Auka fræðslu og þjálfun samningafólks
- En fyrst og fremst þarf að setja ramma sem aðilar skuldbinda sig til að standa við.

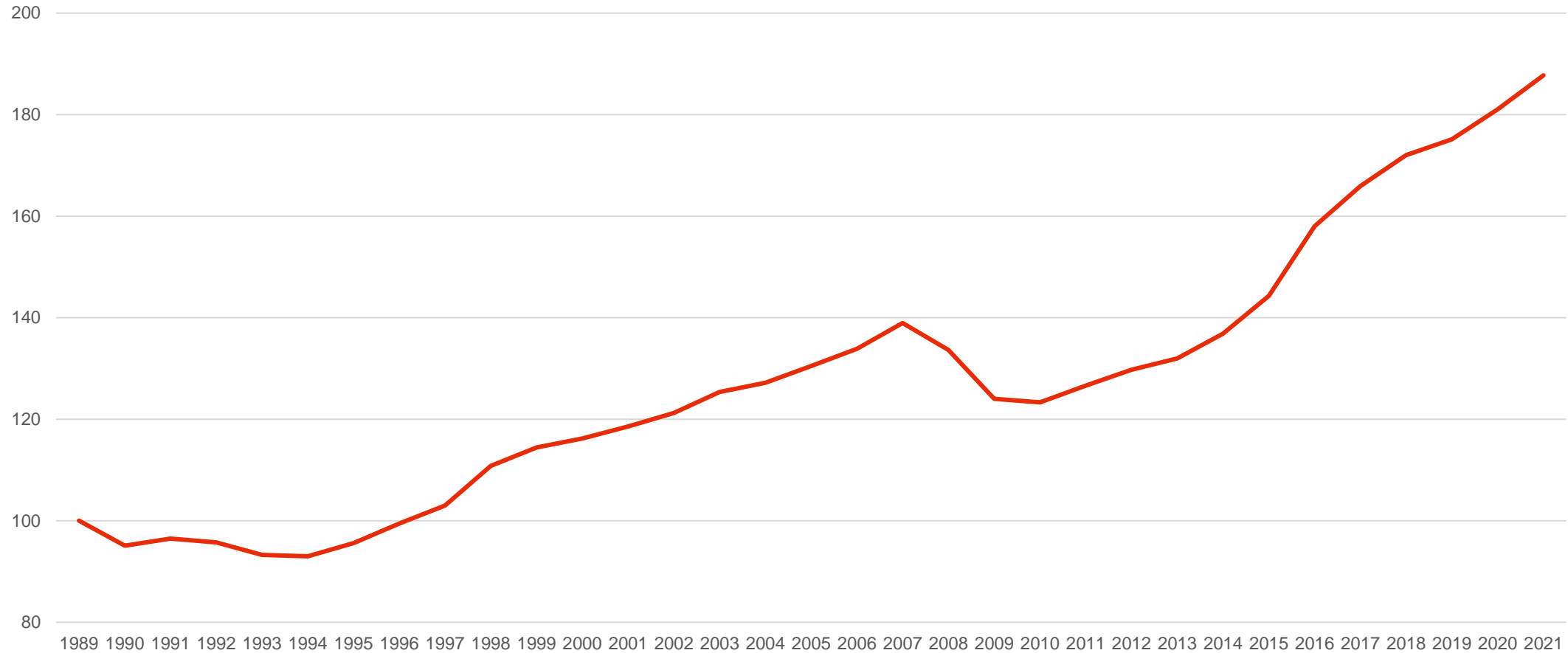


Launapróun m.v. mismunandi forsendur



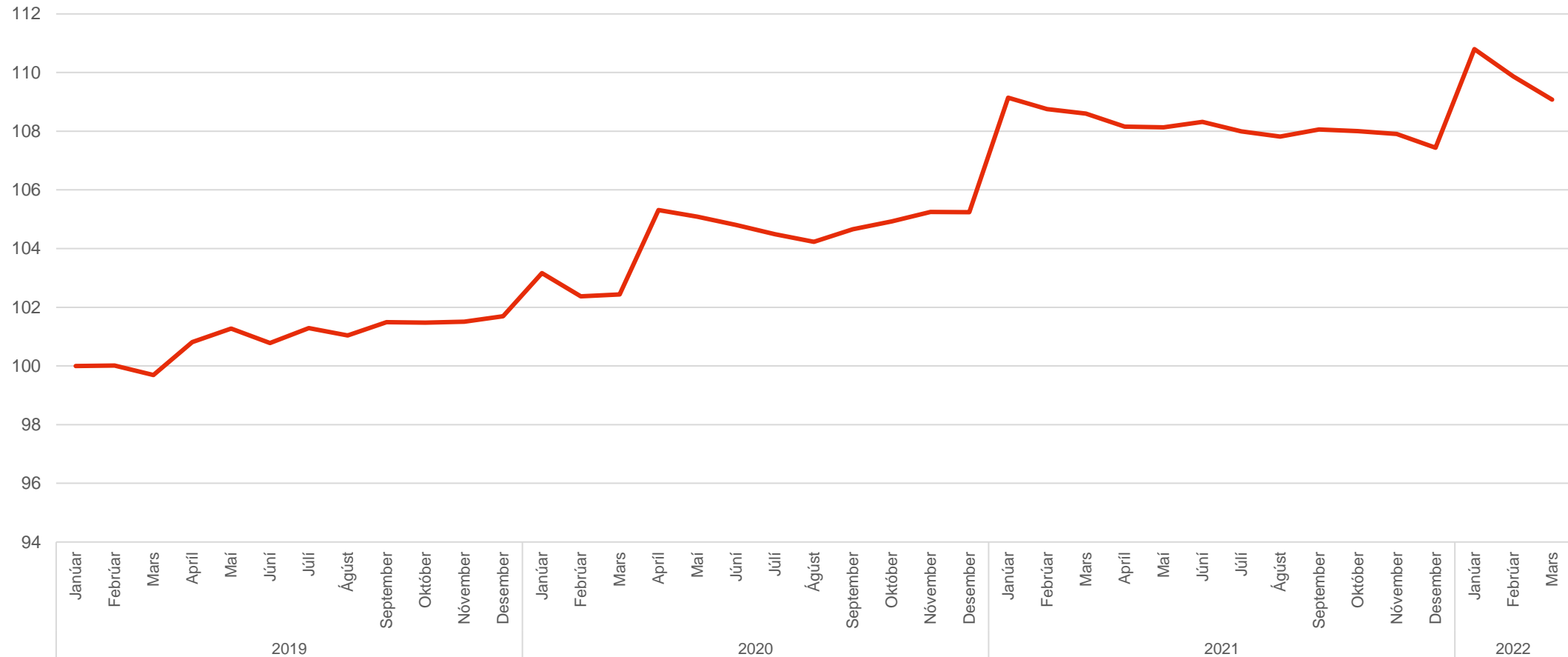


Kaupmáttarþróun





Kaupmáttarþróun á samningstímabilinu



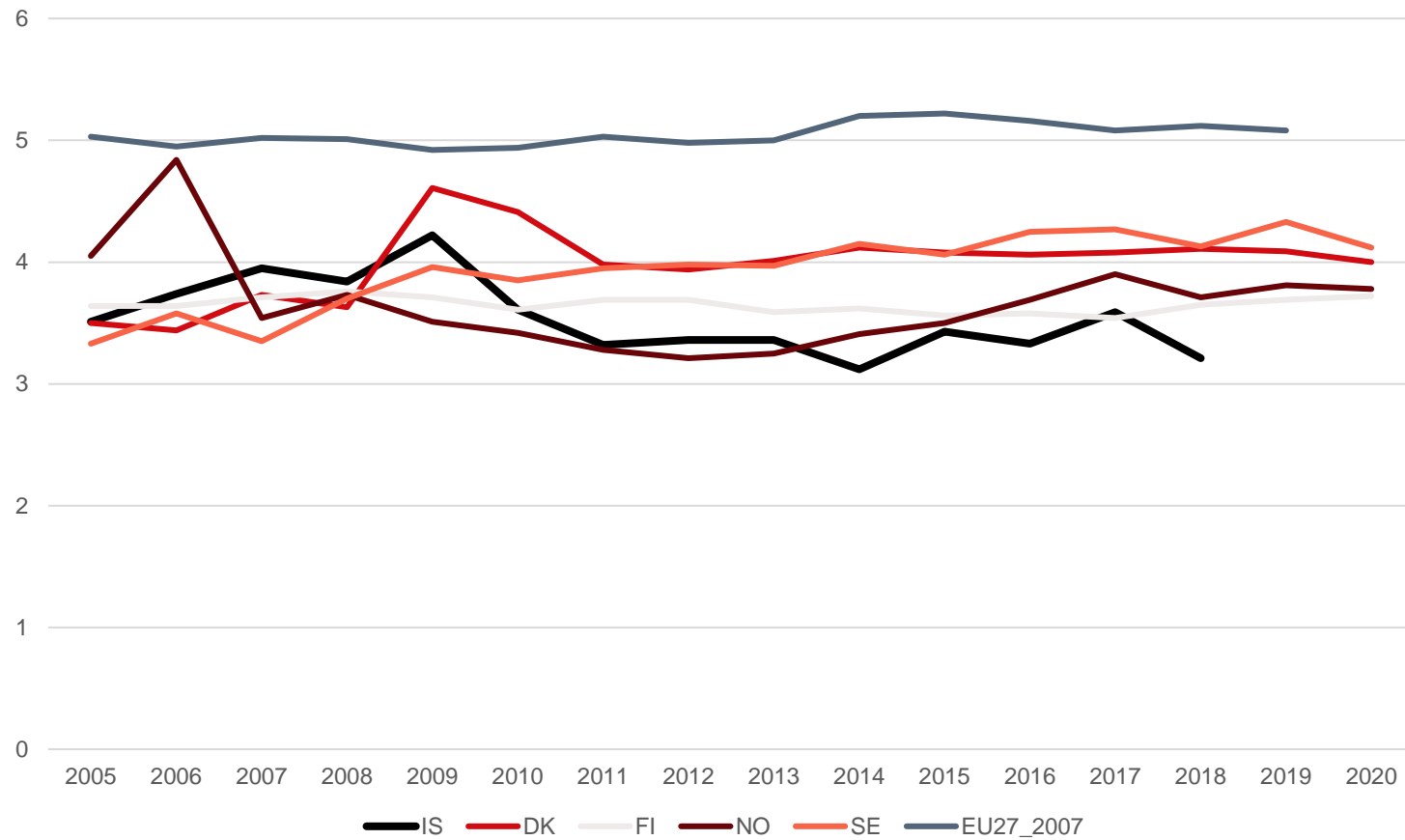


Staða

- Sparnaður heimilanna
- Skuldir heimilanna
- Launadreifing minni hér en víðast annars staðar
- Lágtekjuhlutfall einnig

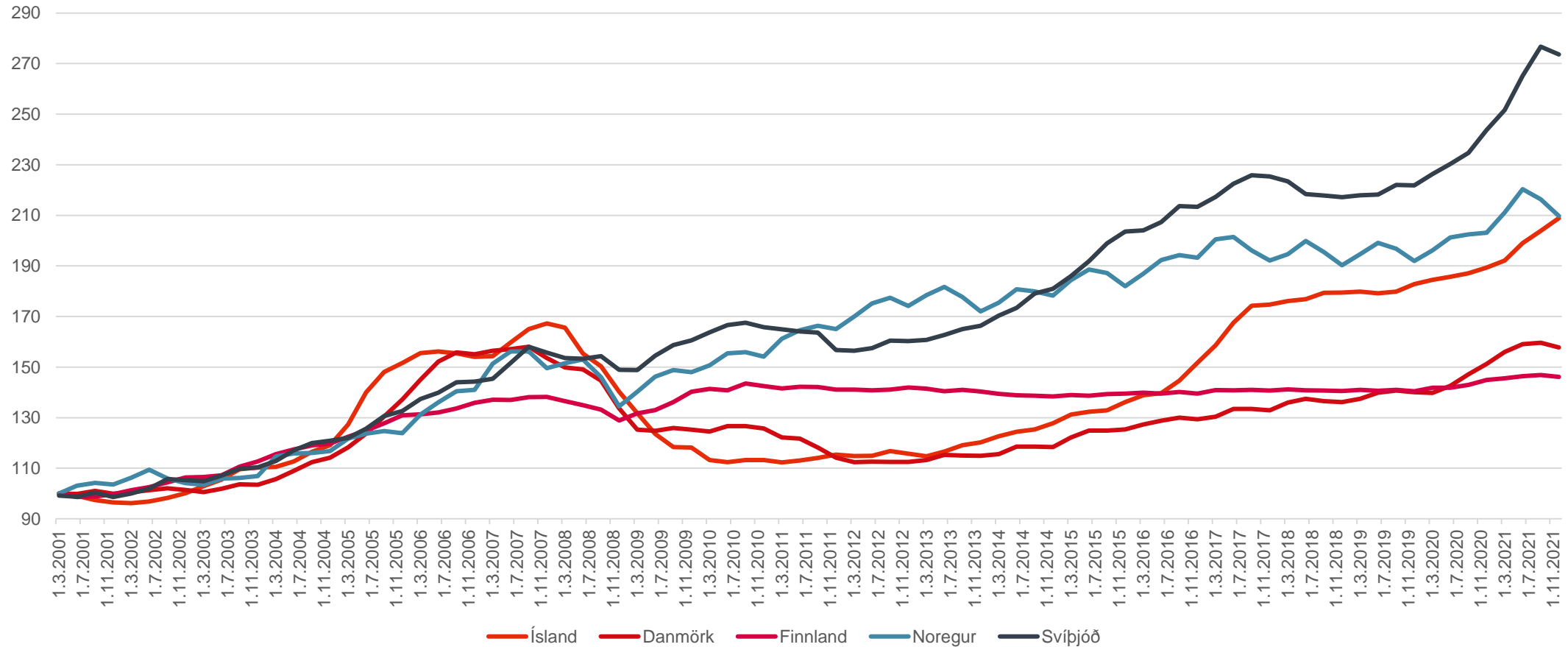


Fimmtungastuðull



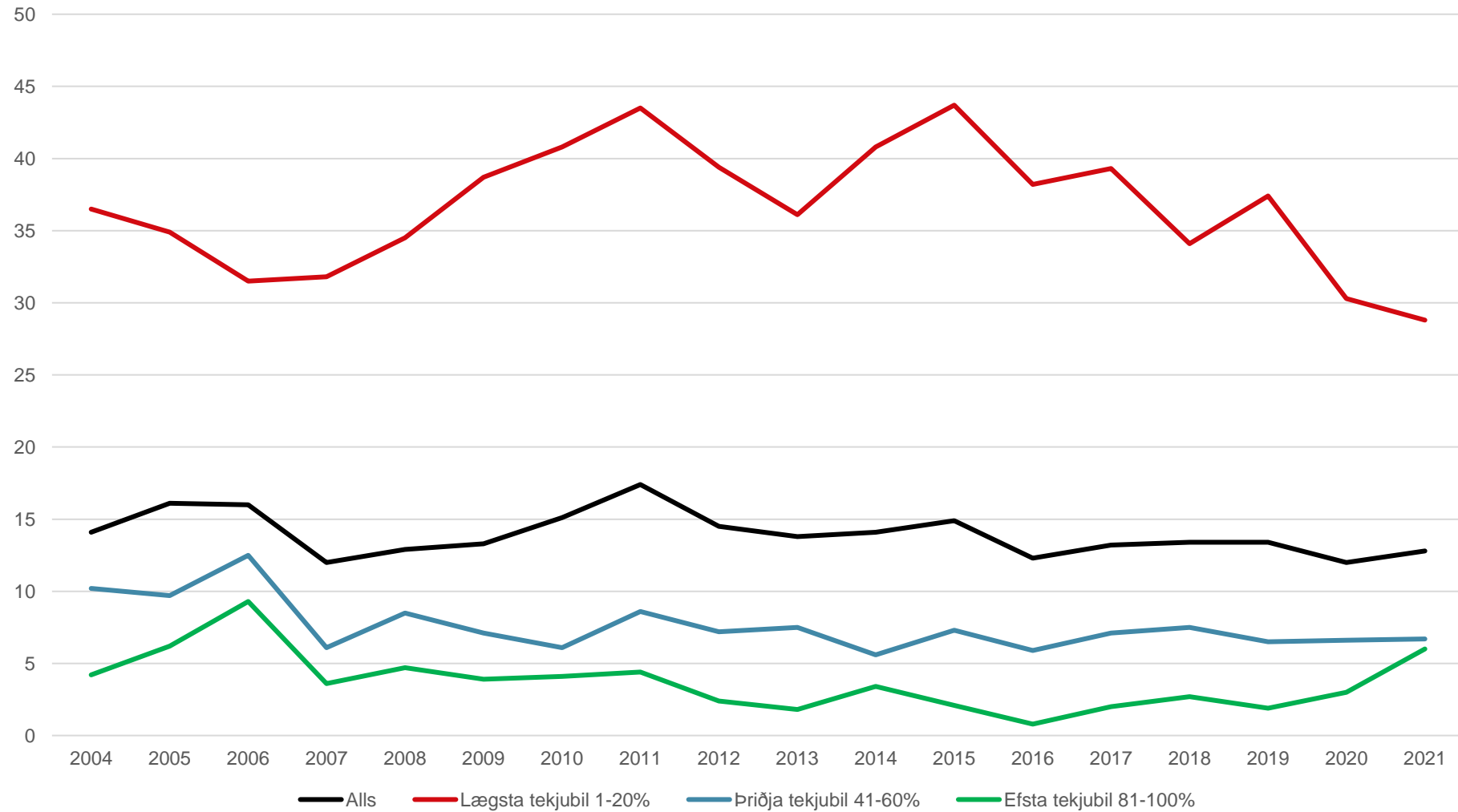


Raunverð húsnaðis





Íþyngjandi húsnæðiskostnaður

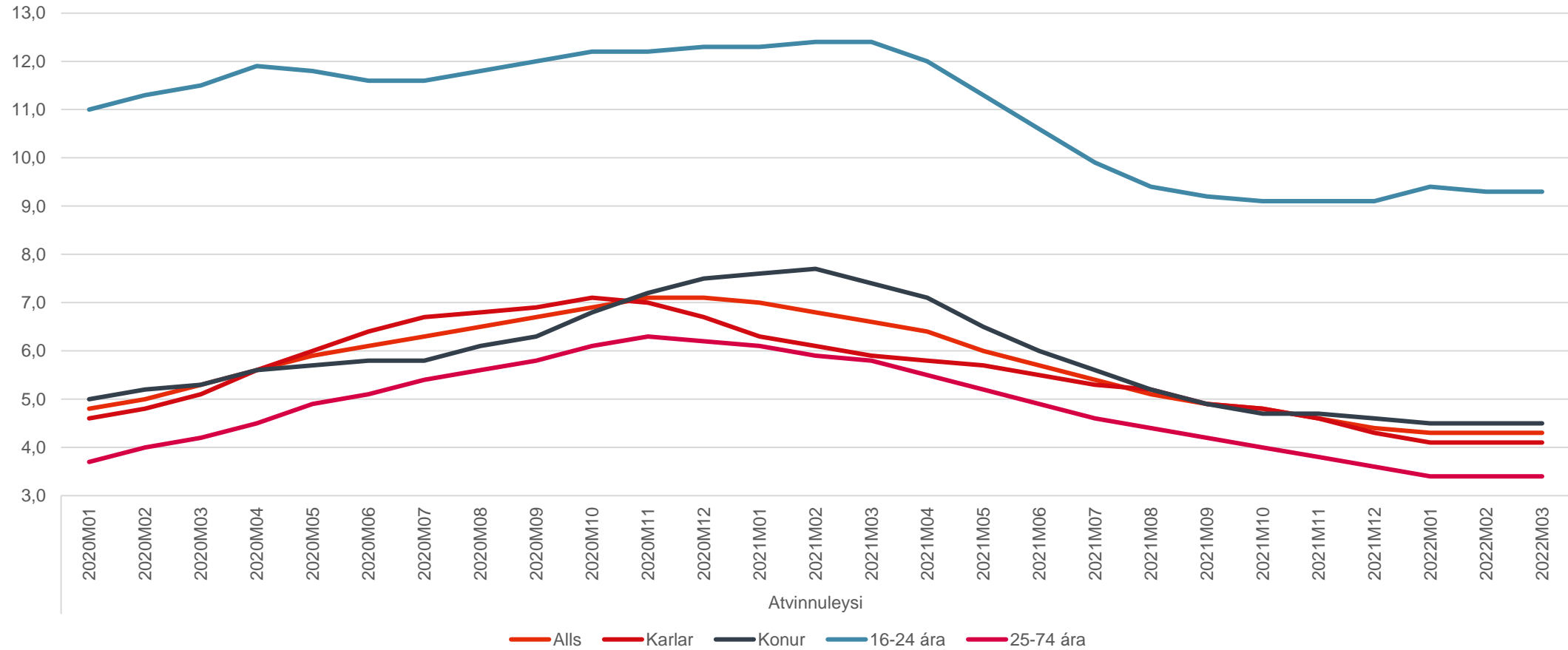


Áhrif Covid-19 á vinnumarkað



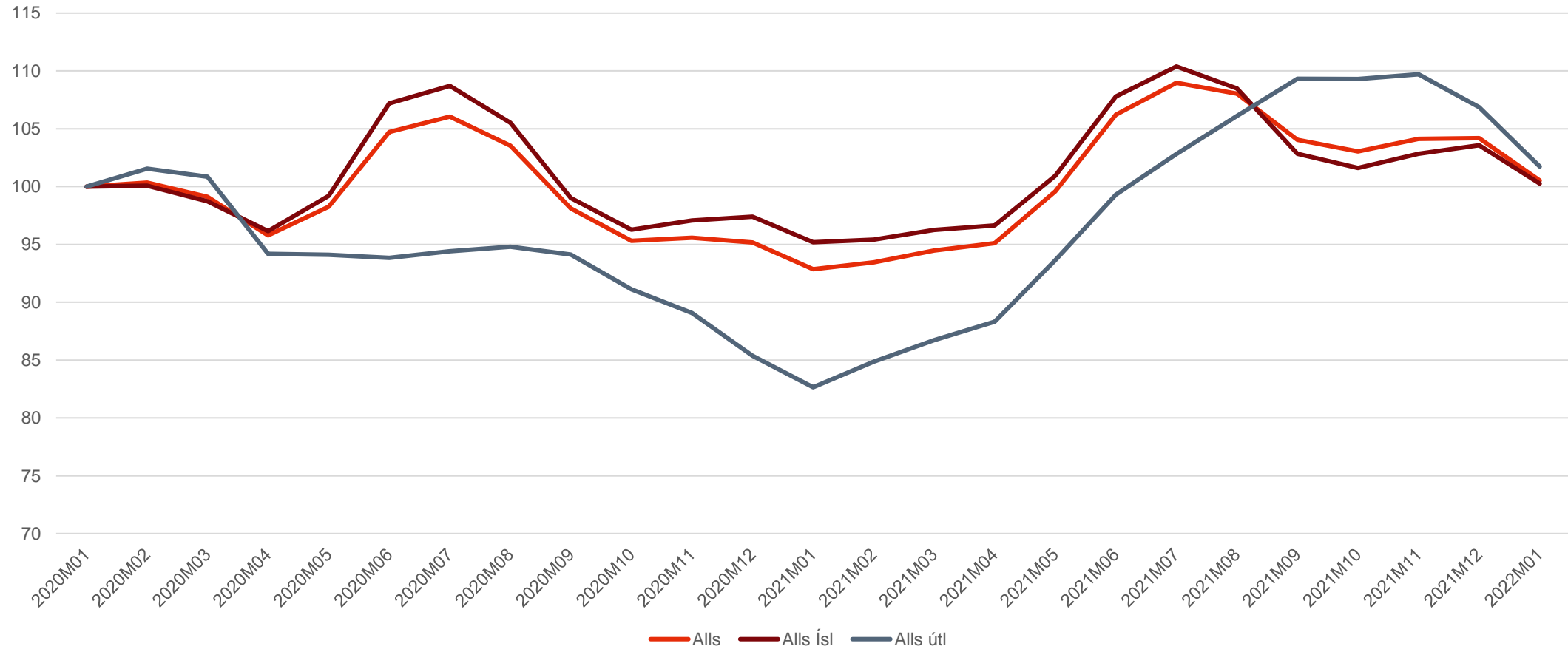


Atvinnuleysi



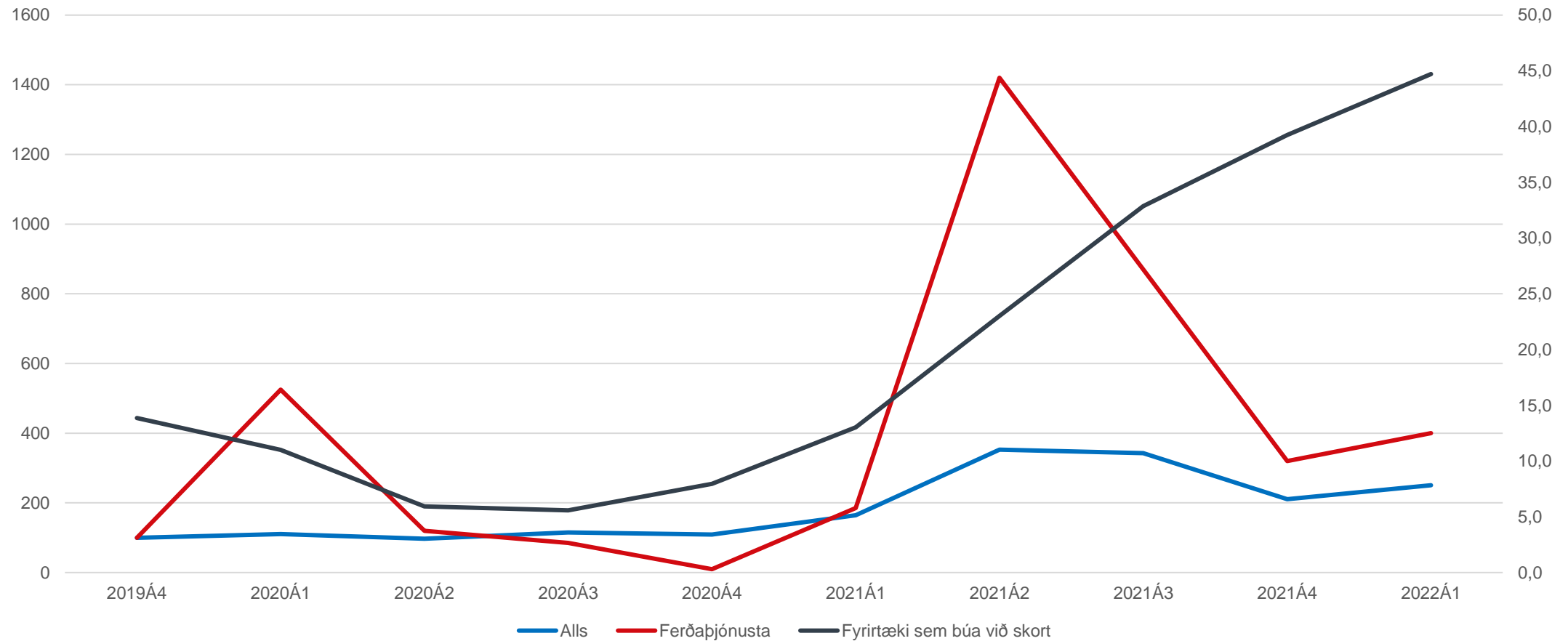


Fjöldi starfandi eftir ríkisfangi





Laus störf og hlutfall fyrirtækja sem búa við skort á starfsfólki





Horft lengra fram á veginn

- Líklegt að margt breytist á næstu árum/áratugum
- Sjálfvirknivæðing
- Gervigreind
- Harkhagkerfi
- Skortur á vinnuafli, t.d. í umönnun
- Pólun (e. polarization) eða uppfærsla (e. upskilling)
- Staða jaðarhópa – innflytjendur, minna menntaðir einstaklingar, konur



Um hvað er hægt að semja?

- Styttri vinnuvika
- Kulnun og endurkoma á vinnumarkað
- Sí- og endurmenntun
- Fjarvinna eftir Covid-19
- Umönnunartímabilið frá fæðingarorlofi til leikskóla
- Aðgerðir sem taka til einstakra hópa



Takk fyrir mig!

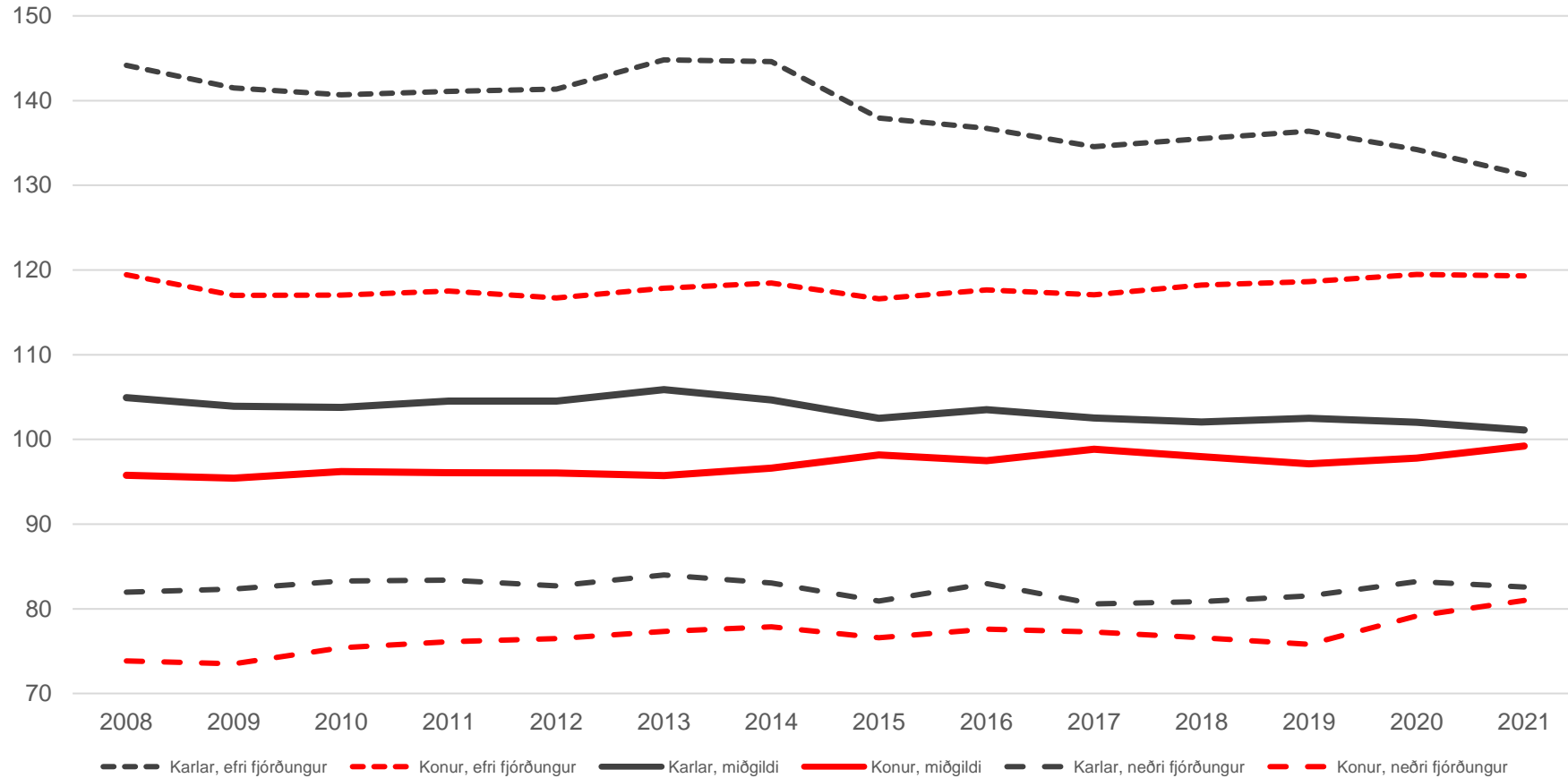


Viðauki



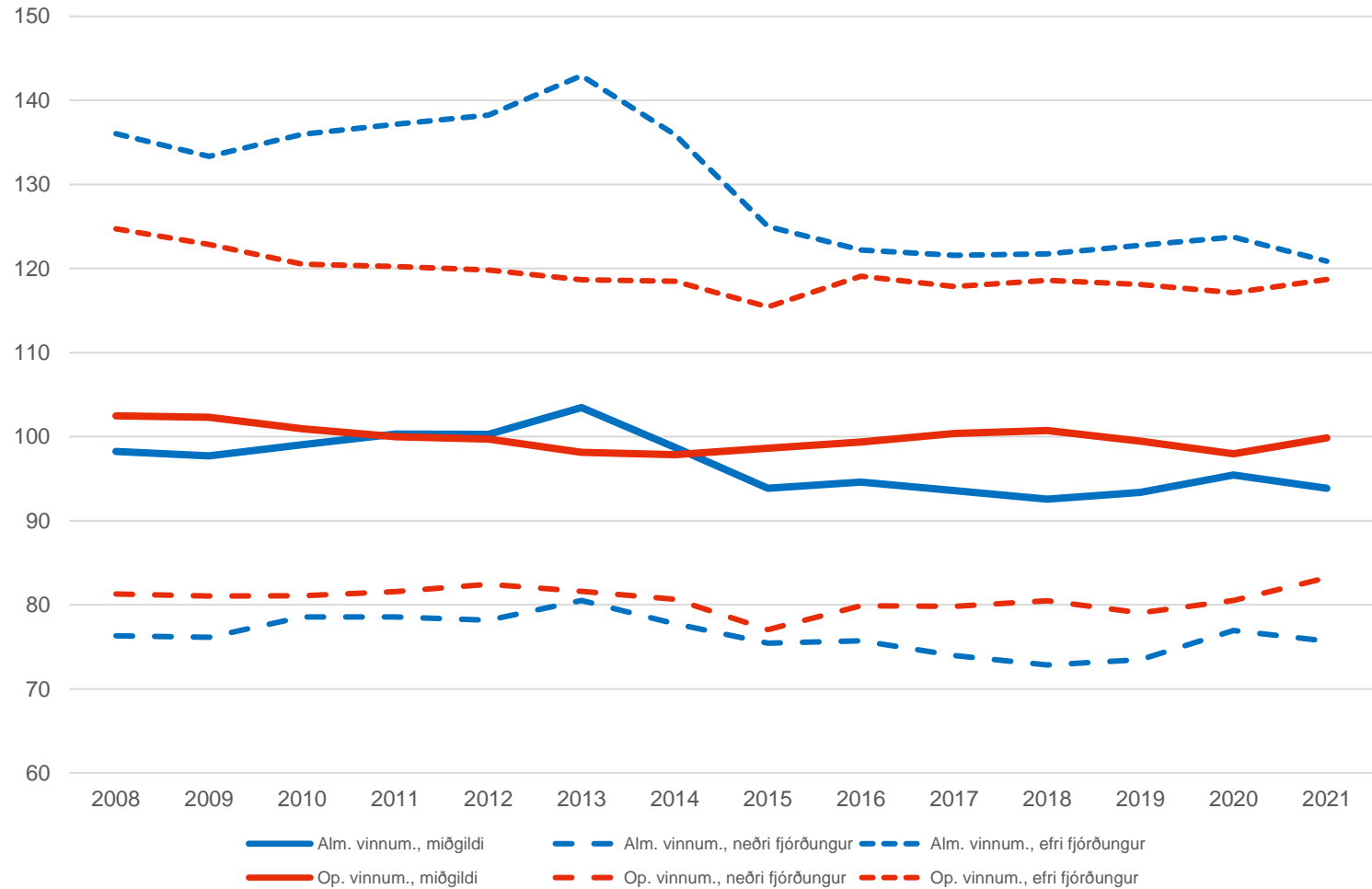


Launadreifing eftir kyni



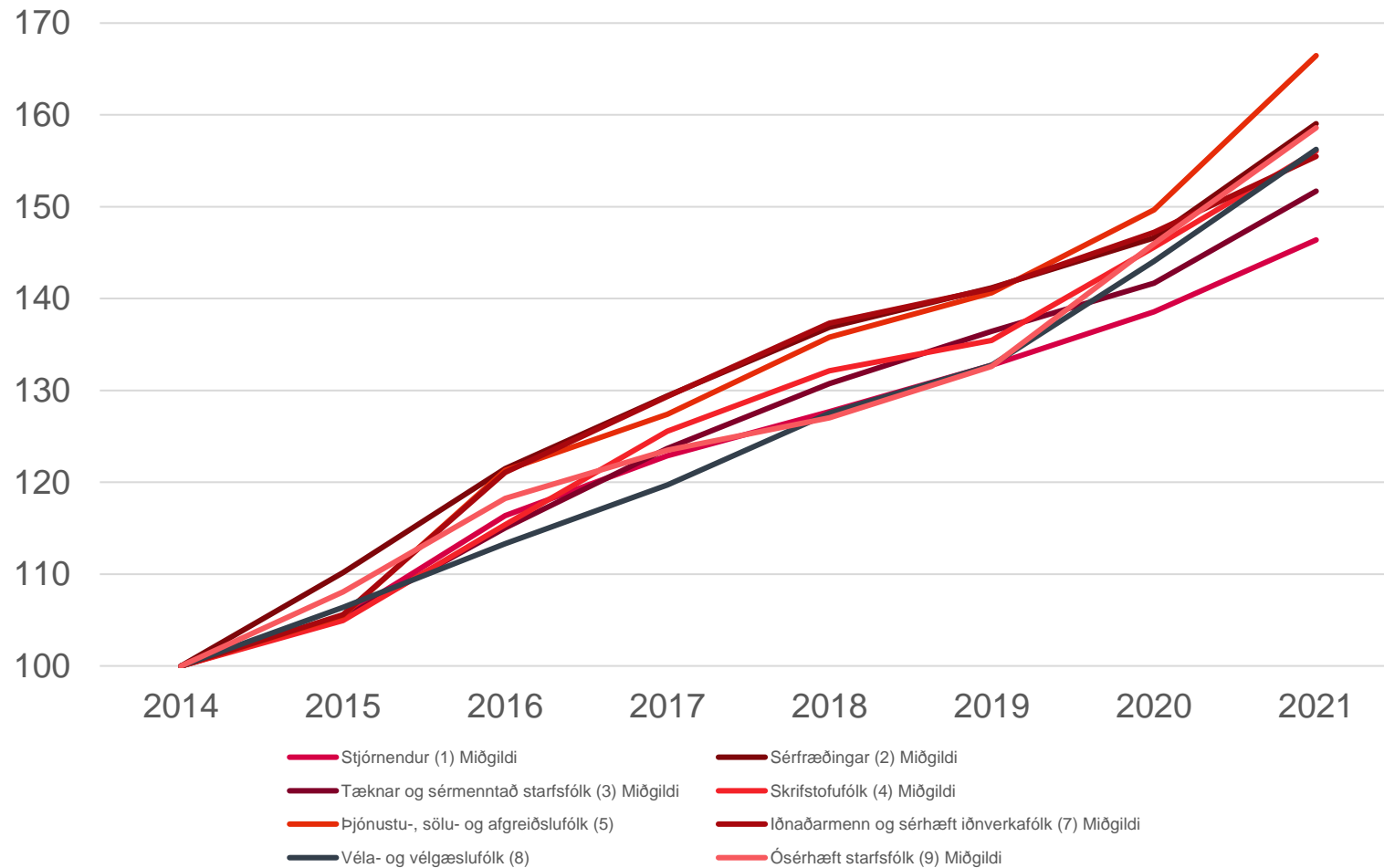


Launapróun eftir mörkuðum



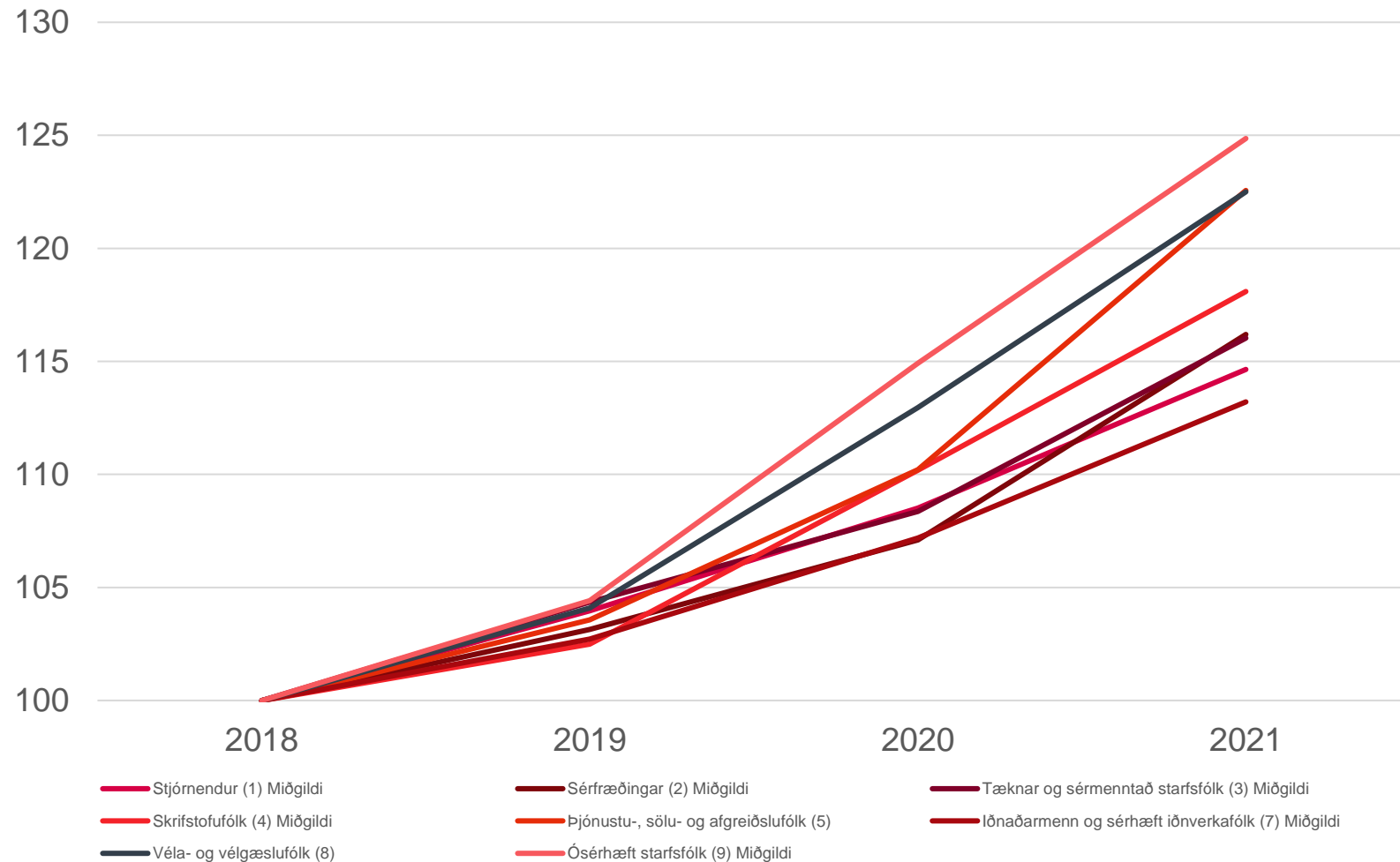


Launapróun eftir launþegahópi



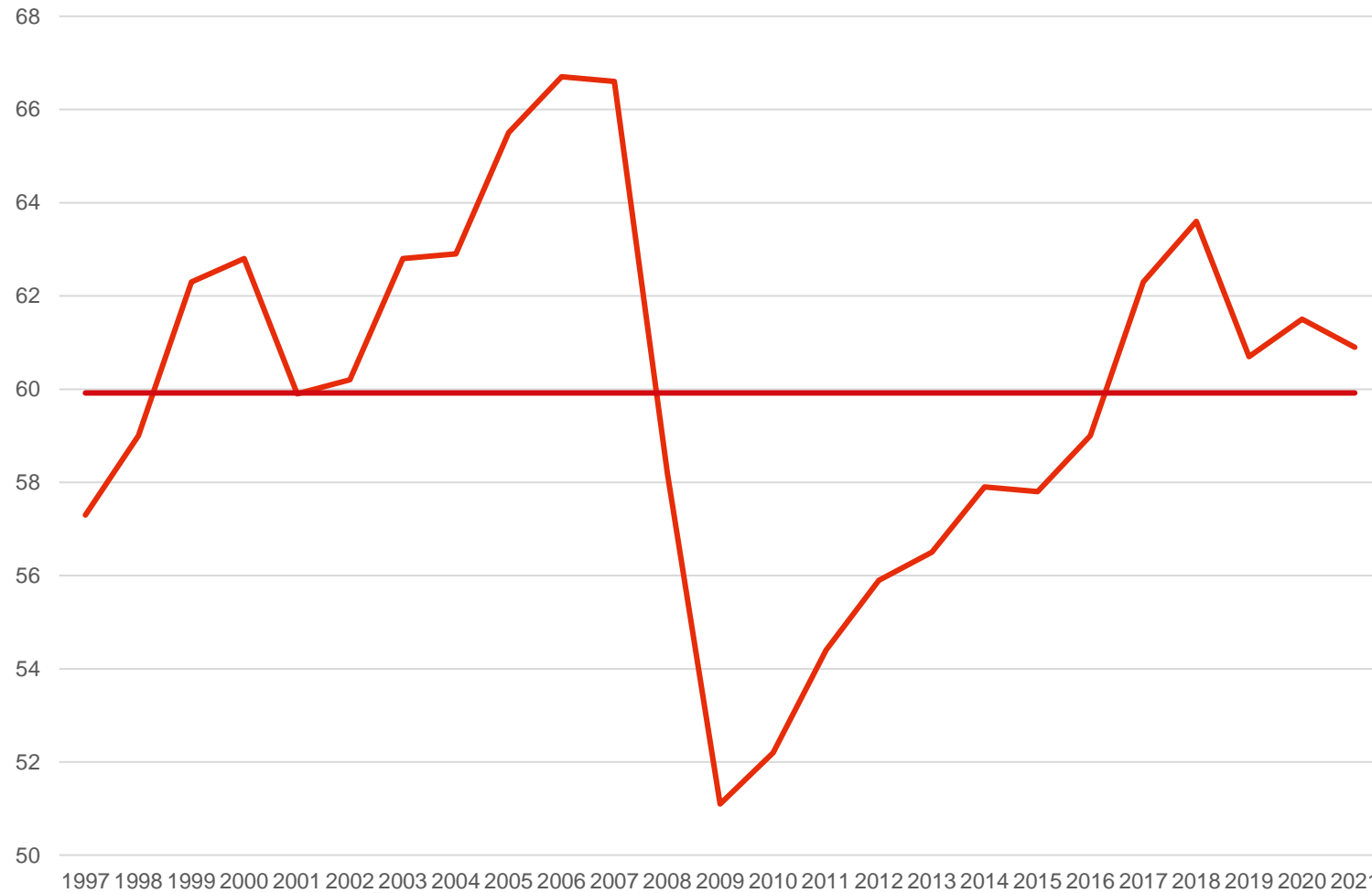


Launapróun eftir launþegahópi



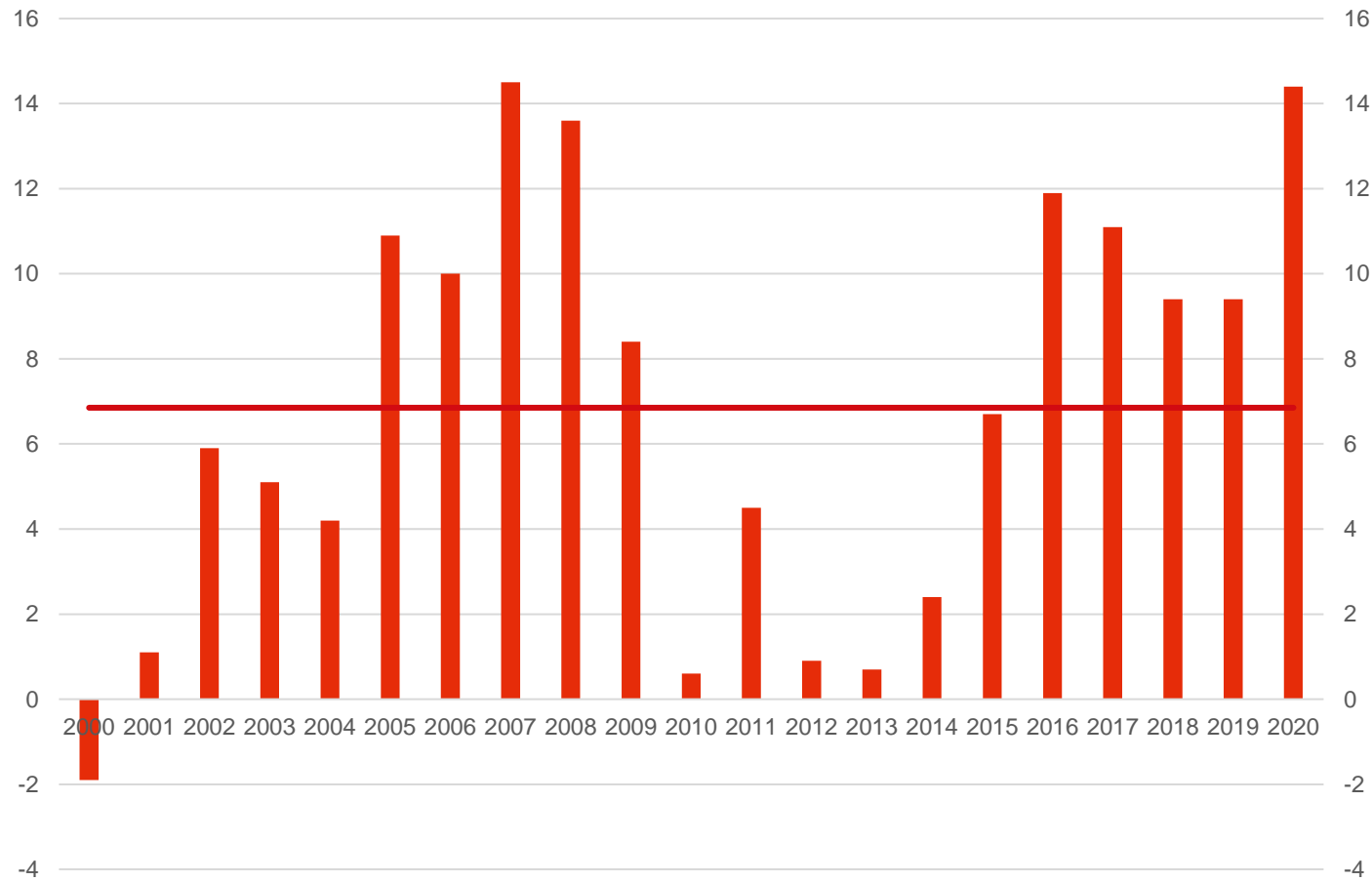


Launahlutfall



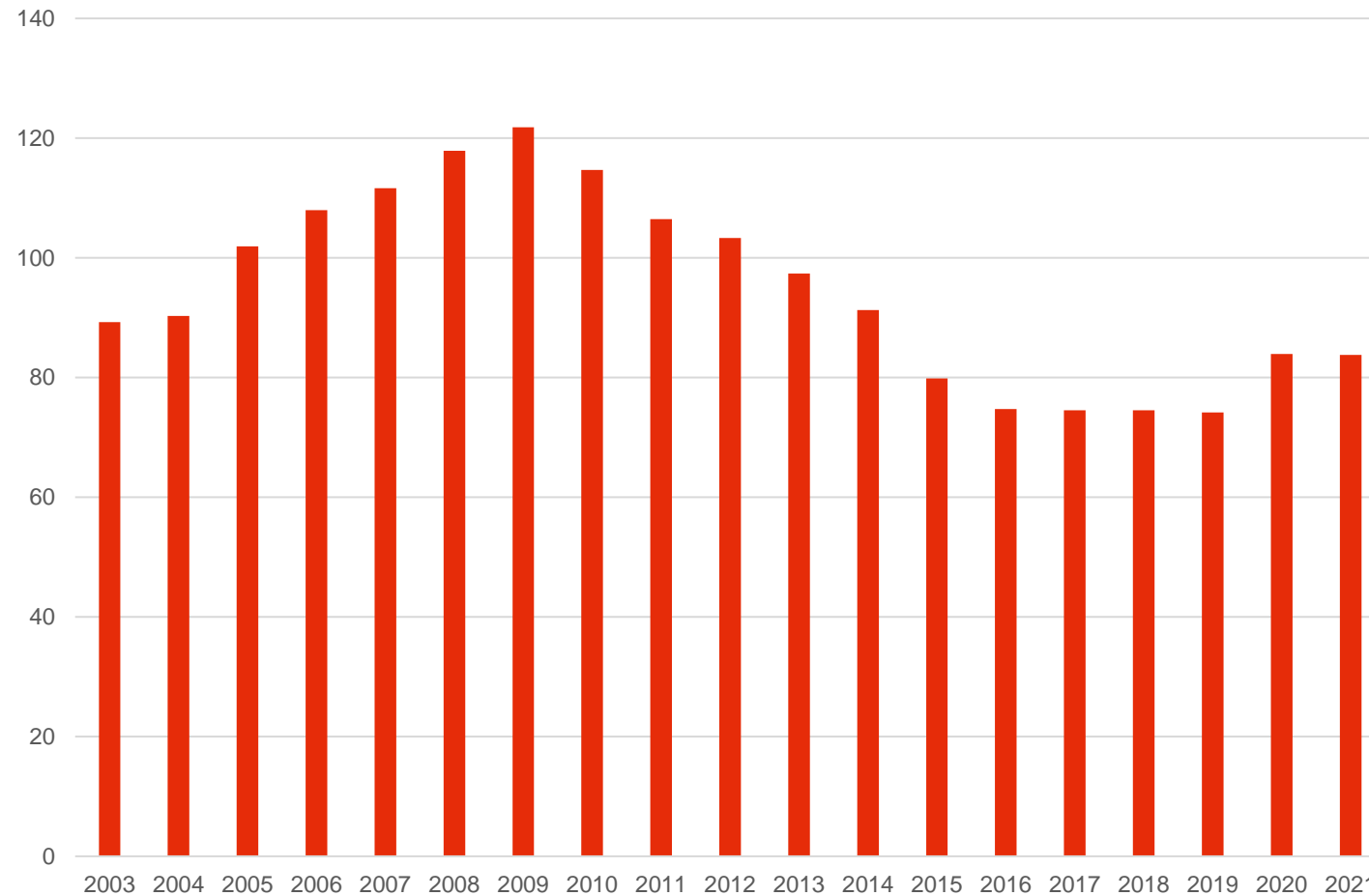


Vergur sparnaður heimilanna



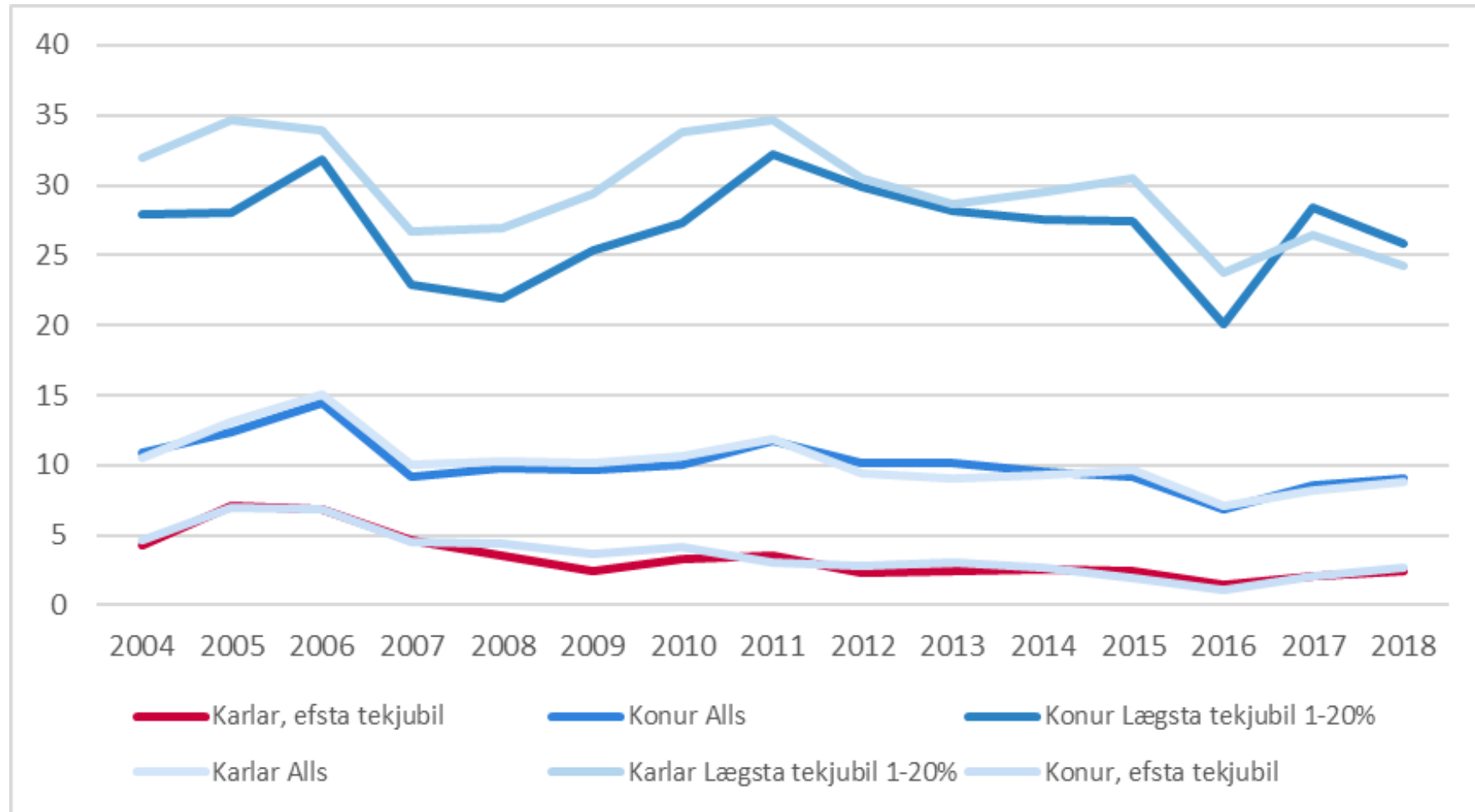


Skuldir heimilanna



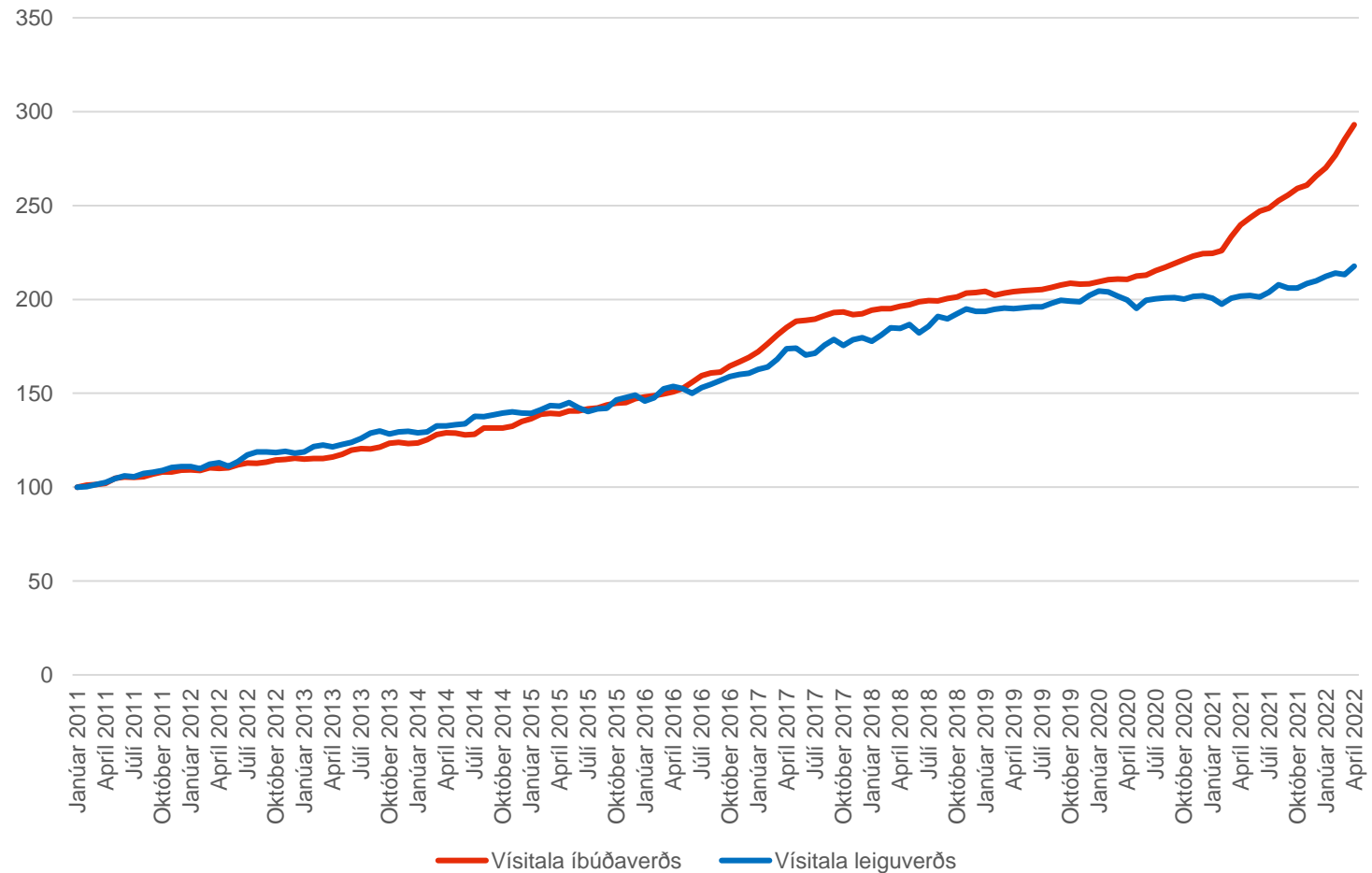


Íþyngjandi húsnæðiskostnaður



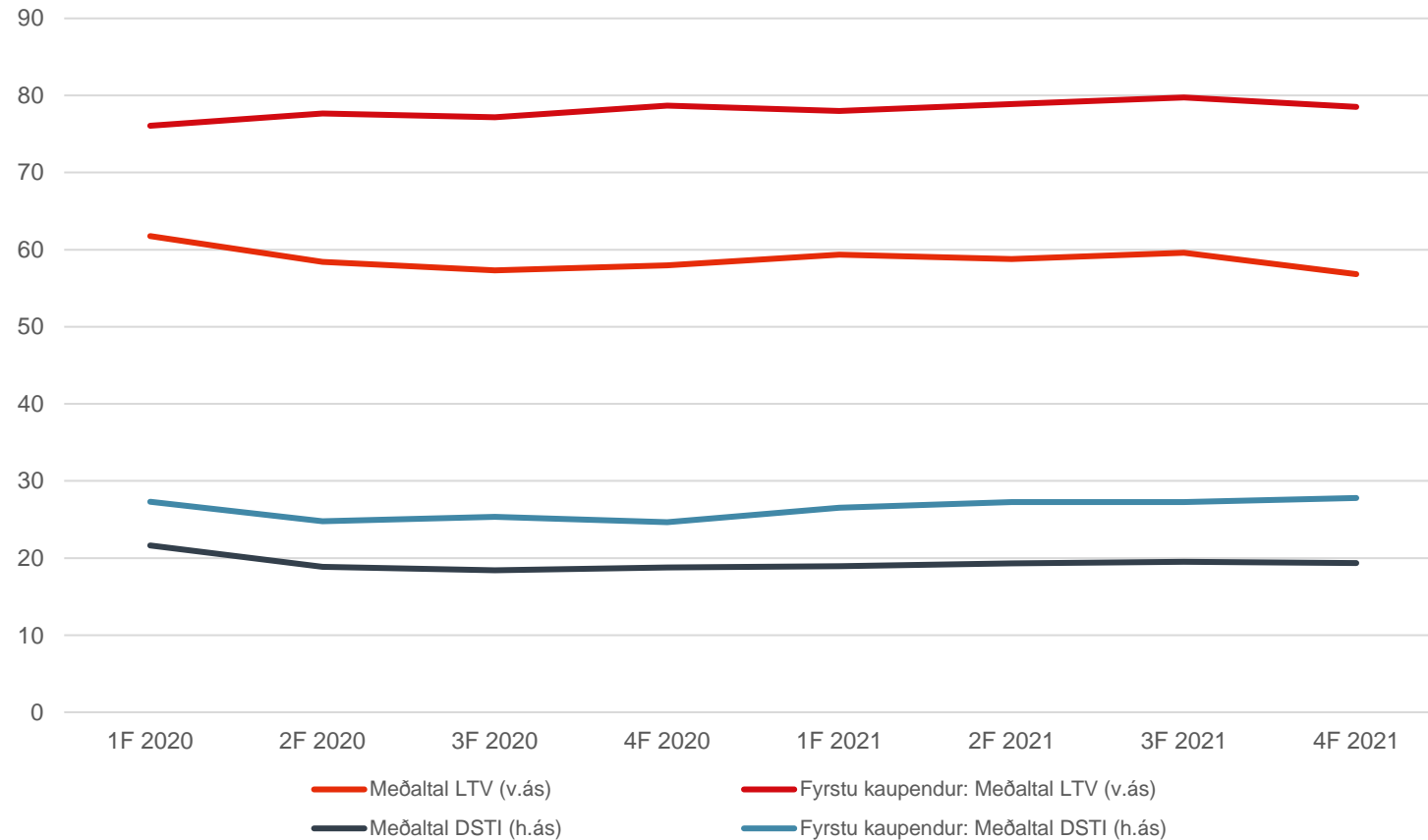


Kaupverð vs. leiguverð



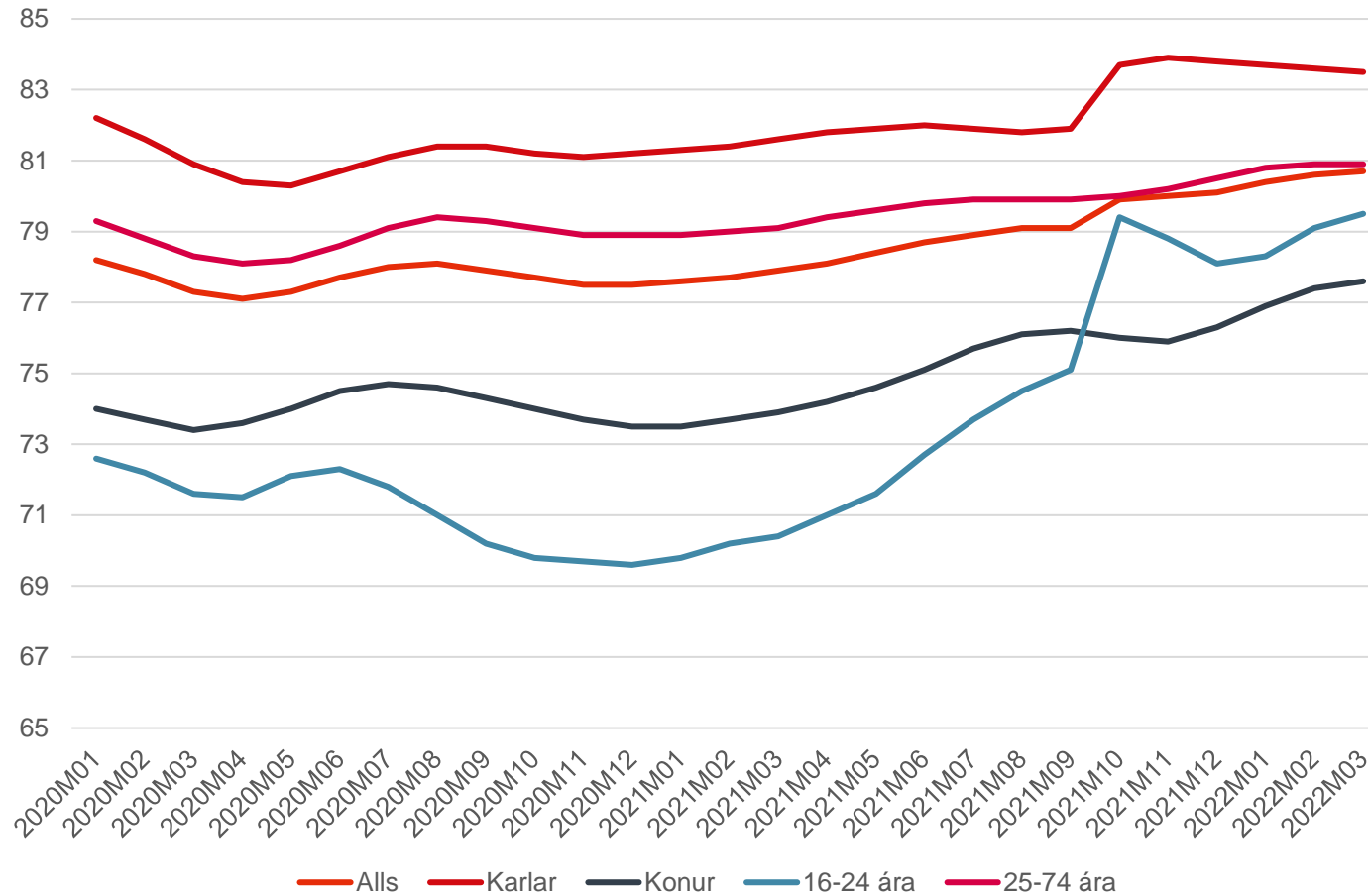


Veðsetningar- og greiðslubyrðarhlutfall



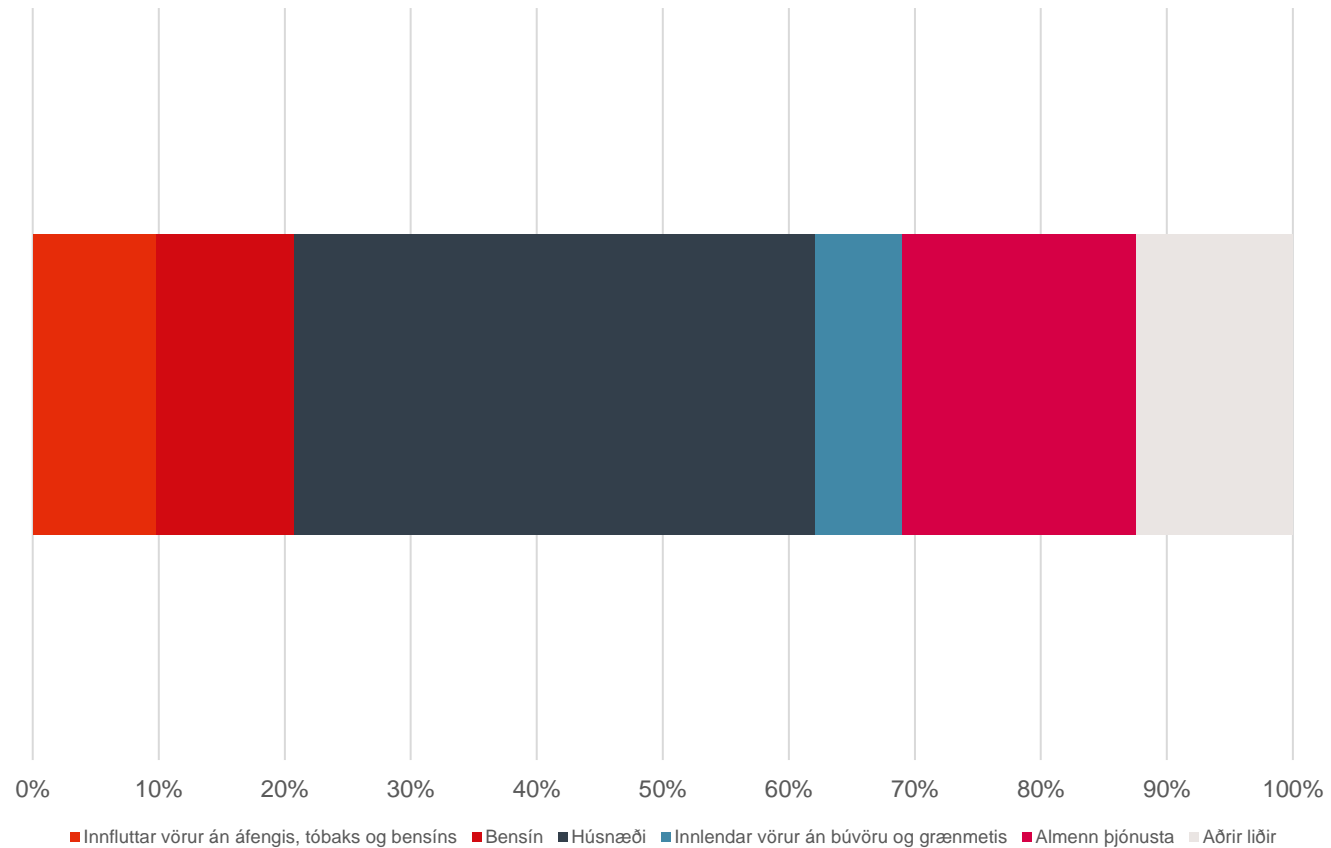


Atvinnuþátttaka í Covid



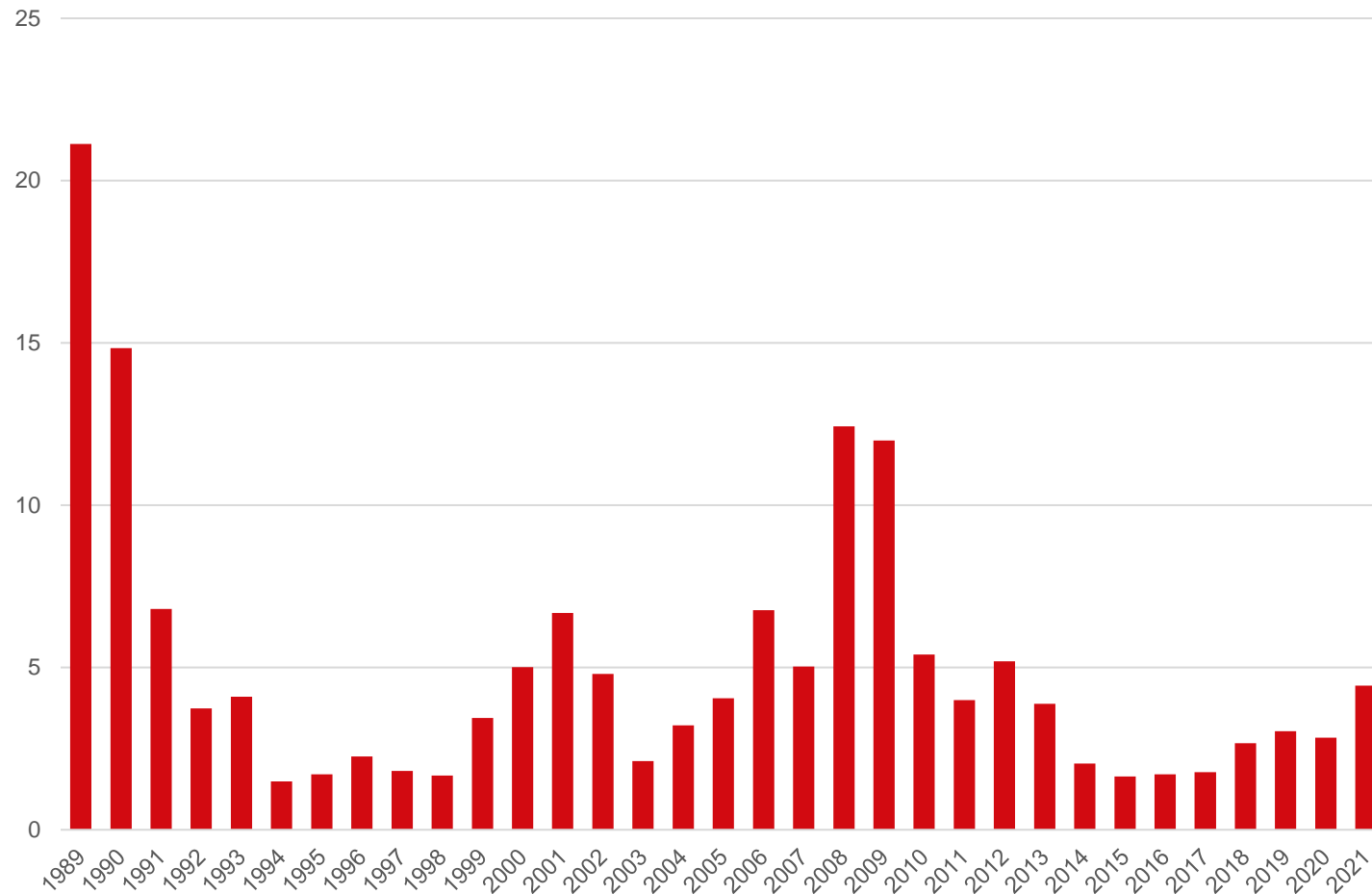


Verðbreyting síðustu tólf mánuði



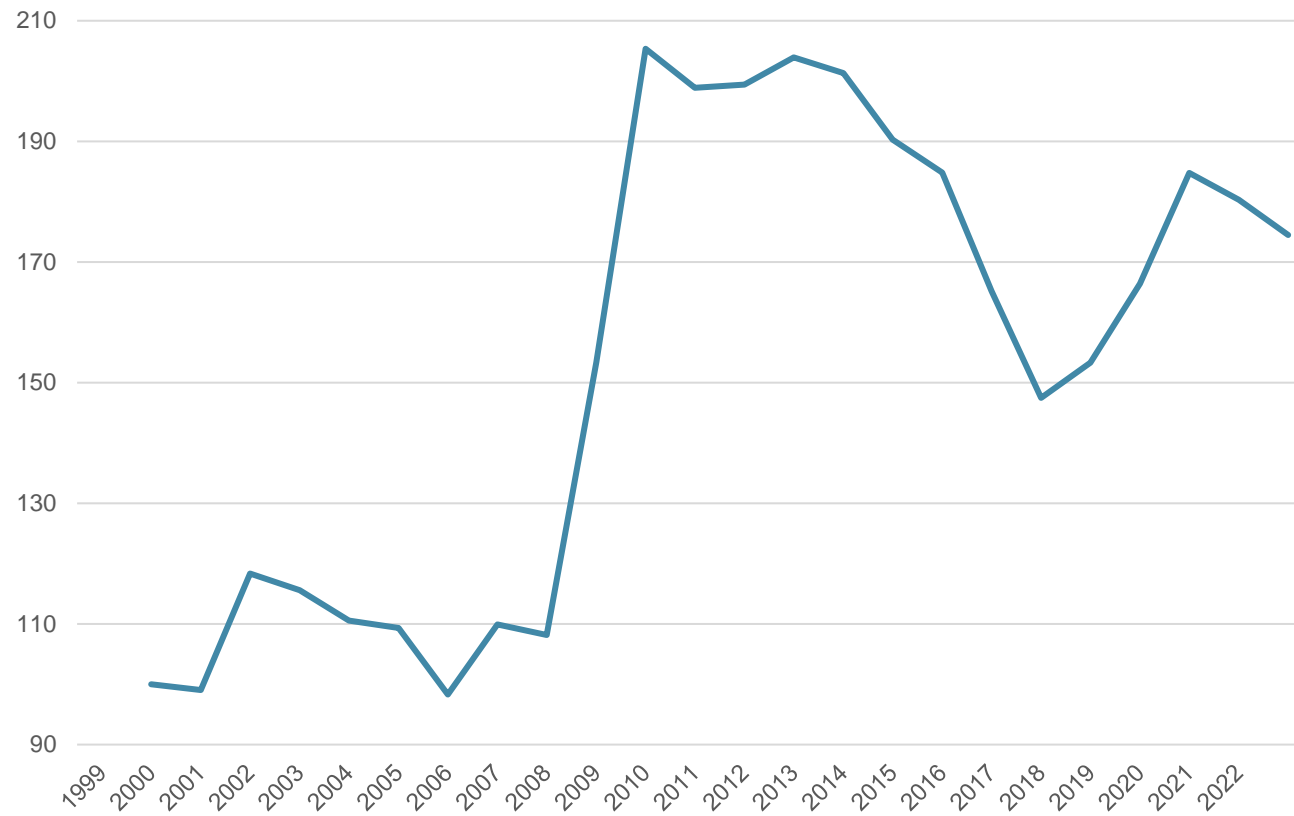


Verðbólga



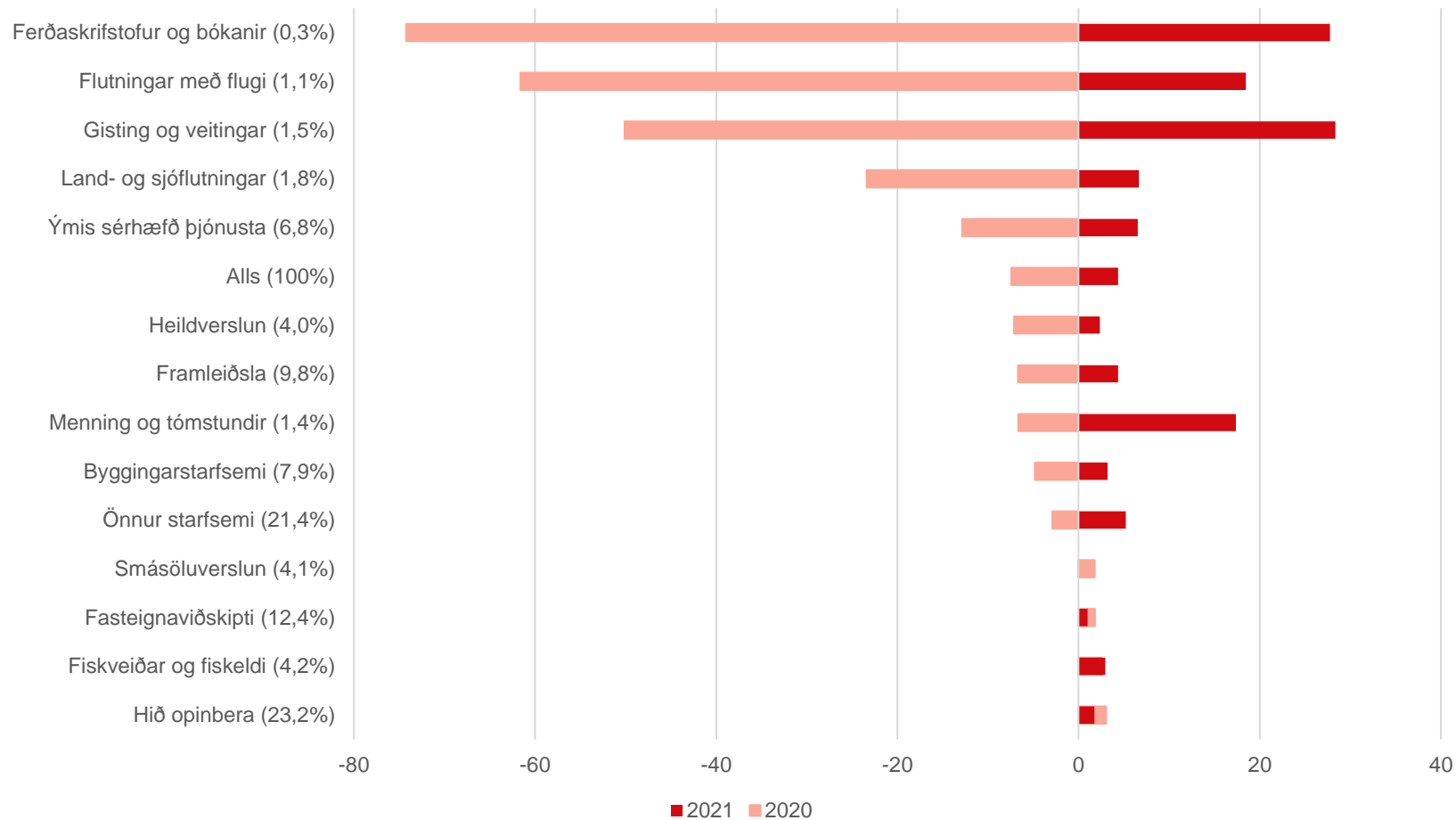


Gengisvísitala



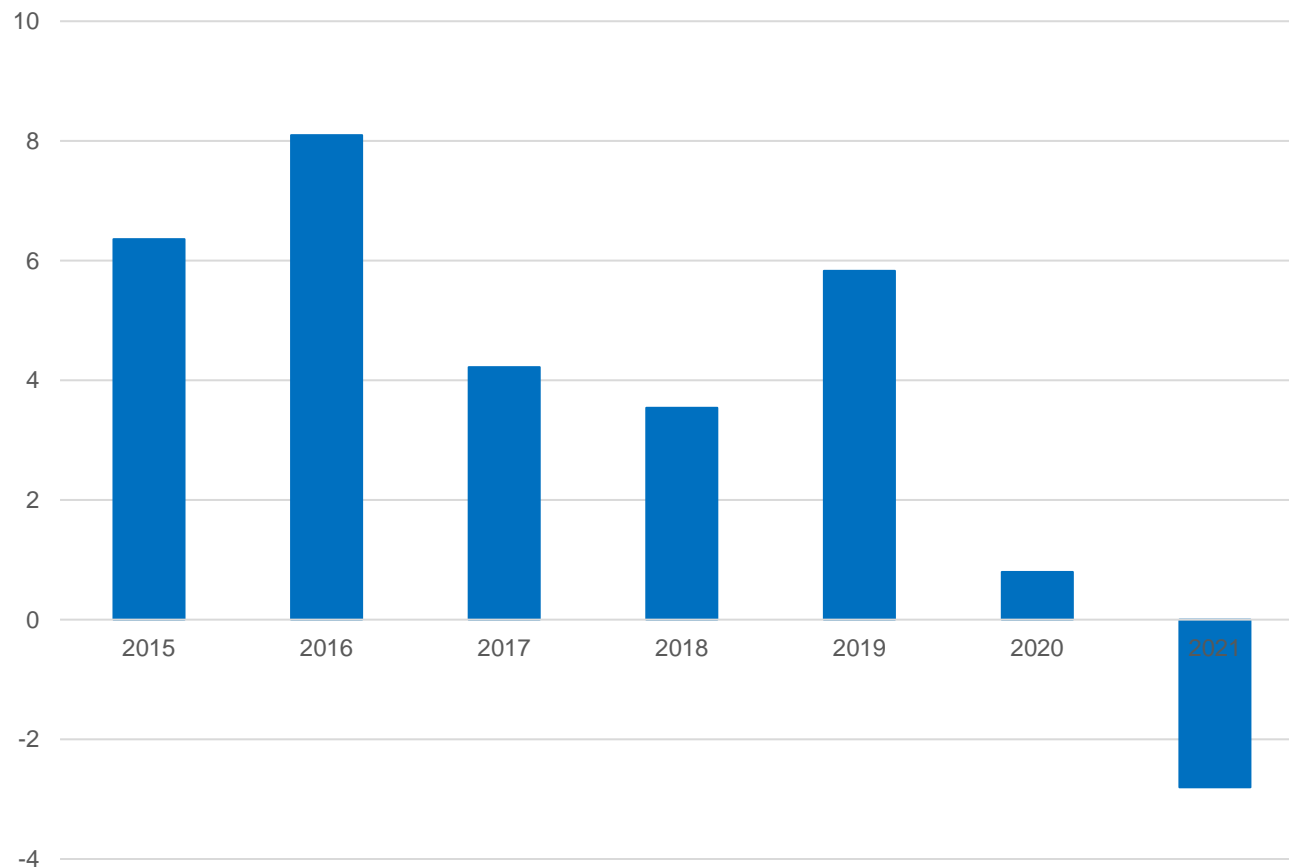


Breyting í vergum þáttatekjum



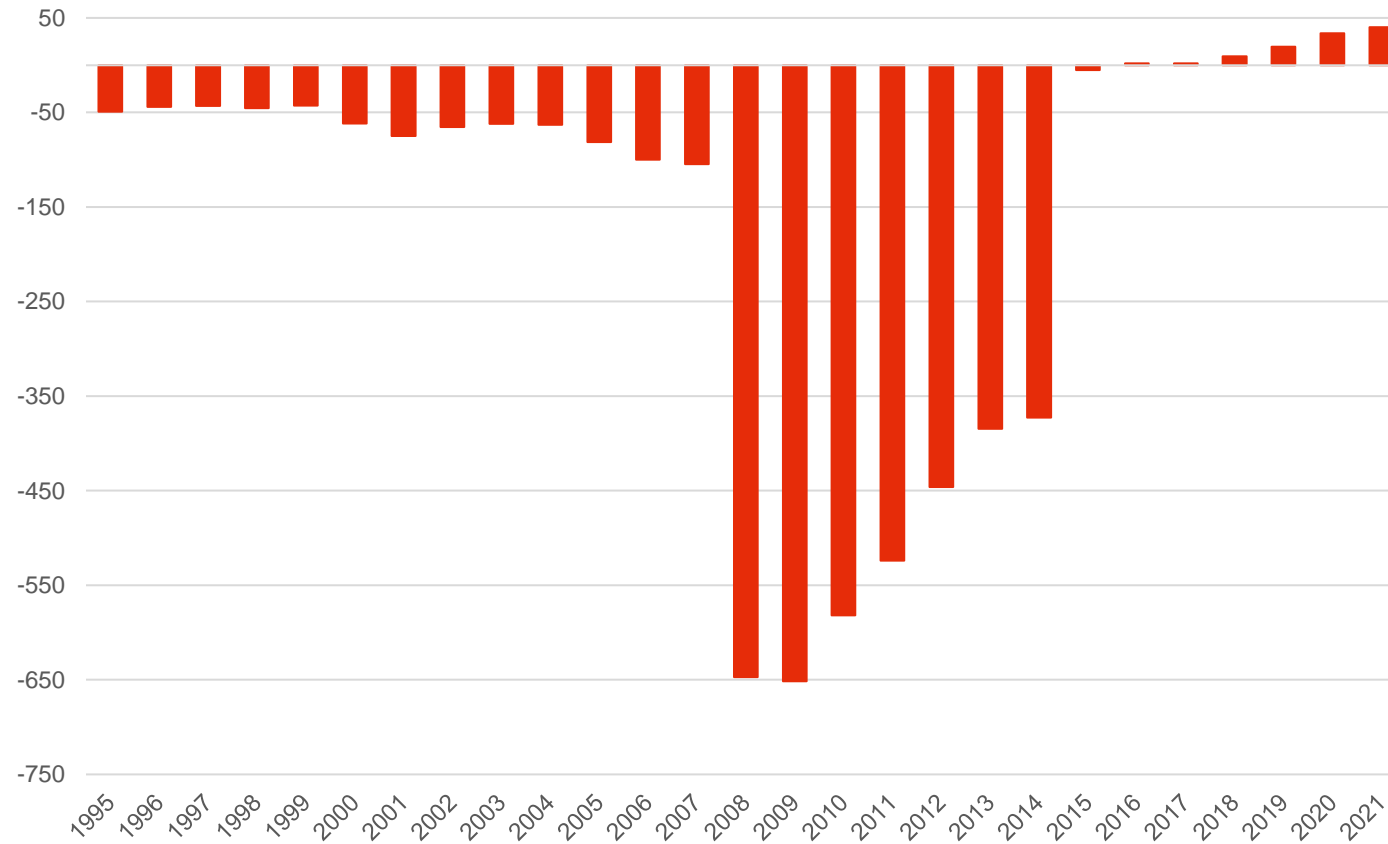


Viðskiptajöfnuður



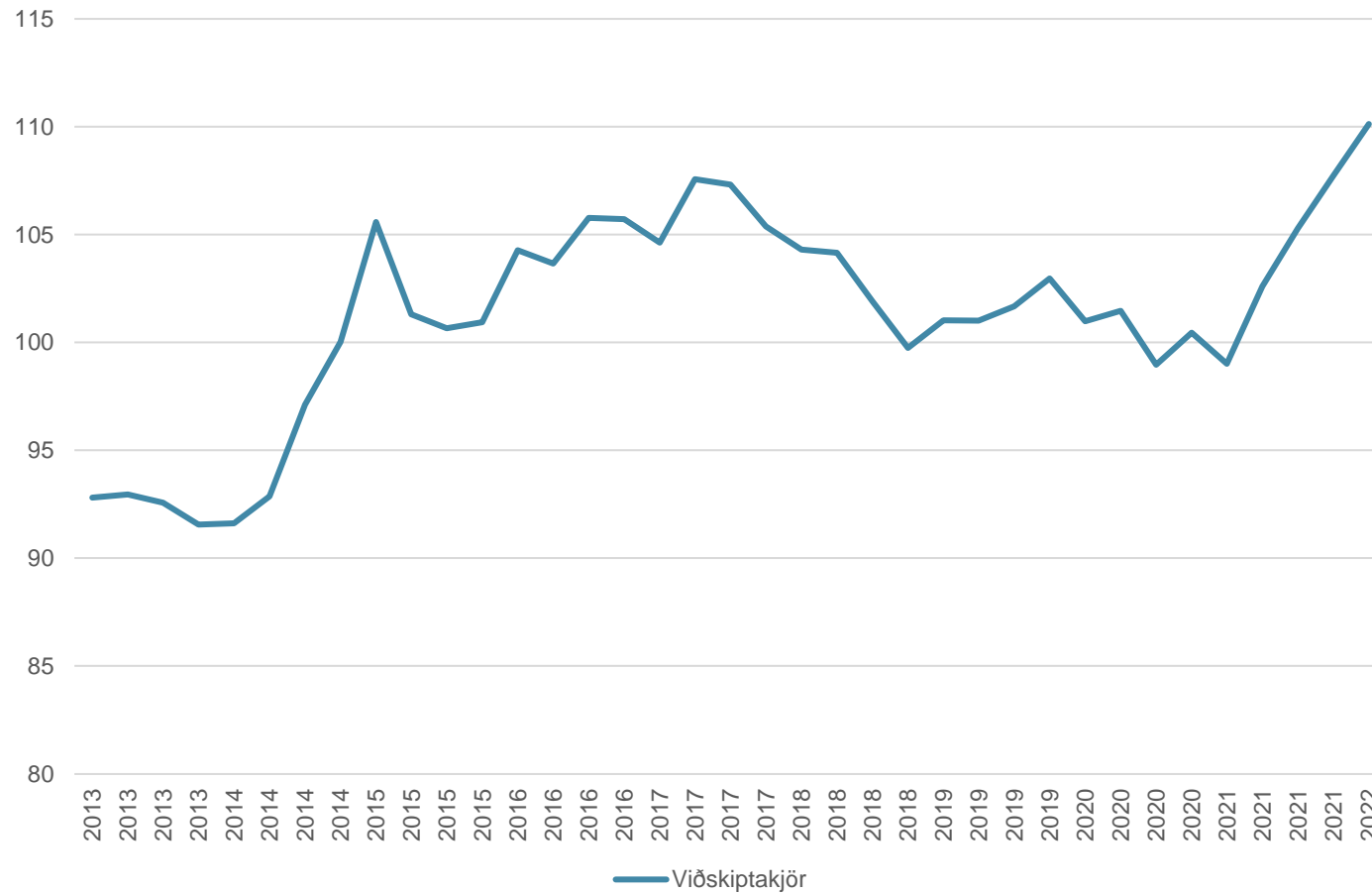


Erlend staða þjóðarbúsins





Viðskiptakjör





Hrávöruverð

